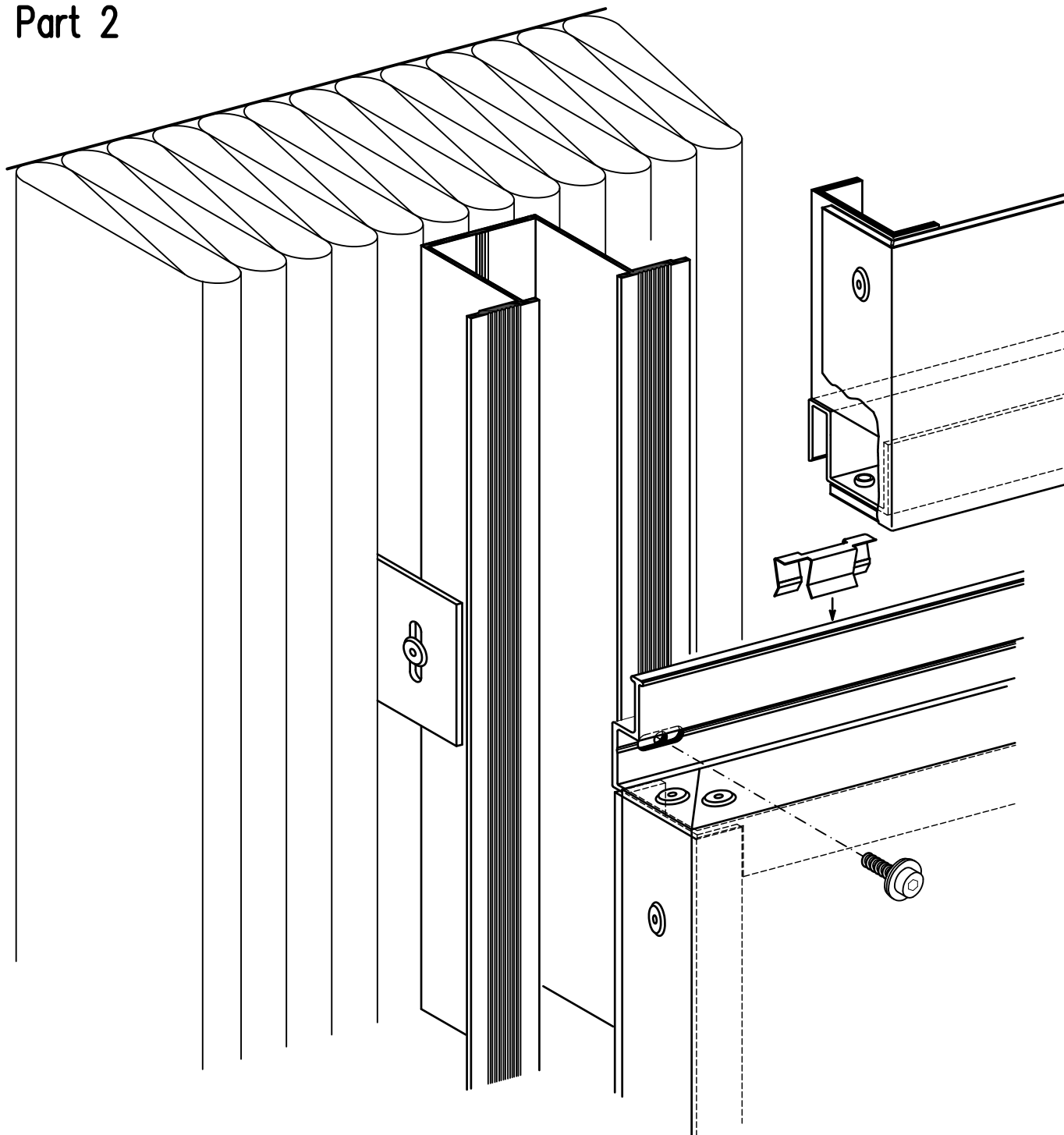


# ALUCOBOND Design Manual

## Fascia, Tray Panels SZ 20 – Horizontal Panel Layout

---

### Part 2



• Description	Page 1.1
• Extruded Sections and Accessories	Pagen 2.1 – 2.3
• Examples	Pagen 3.1 – 3.90

# Fascia, Tray Panels SZ 20 – Horizontal Panel Layout

## Description

---

With tray panel-elements based on the SZ-principle aesthetic and architectural high-grade fascia claddings can be manufactured .

Based on construction principle with S-and Z-sections SZ 20 tray panels can be installed fast and simple (tongue and groove principle).

The maximum horizontal and vertical width of gap is 20 mm.

The minimum horizontal and vertical width of gap depends on length of elements and construction conditions.

The tray panel-elements are only fixed at each upper tray panel edge on the vertical arranged substructure section (hat section). To this the Z-section is fixed by stainless fascia screws to the hat sections.

The vertical arranged U-sections are not fixed to the sub-construction.

To ensure the thermal expansion due to the changes in temperature, in the Z-section oblong-holes are to be arranged in the lateral fixing points – depending on the length of the element.

To avoid clatter noise between the horizontal sections as a result of wind loading it is recommended to use plastic clips in a distance of about 1 m.

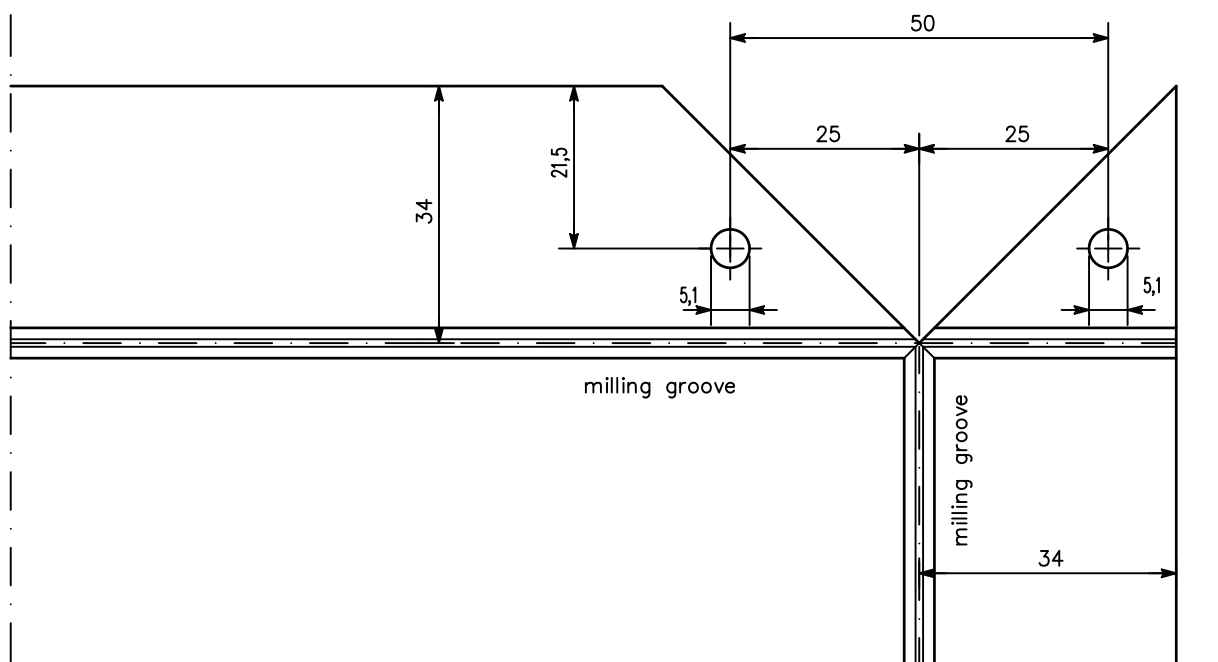
With favourable loadings, SZ 20 panels can span large distances between vertical supports.

The maximum element-measurements dependent on the available production width and on the occurring wind loads.

Compared with solid metal tray panels, ALUCOBOND tray panels offer the following advantages:

- ALUCOBOND panels are delivered ready for fitting with a stove-lacquered surface finish (no subsequent painting required).
- Absolute surface flatness, even after folding.
- Folds can be made by hand (no folding machine required).
- High inherent strength of ALUCOBOND panels permits the use of tray panels with flat surfaces (no auxiliary reinforcement required for large elements).
- Low net weight facilitates simple and rapid installation.
- No anti-drumming coating required.

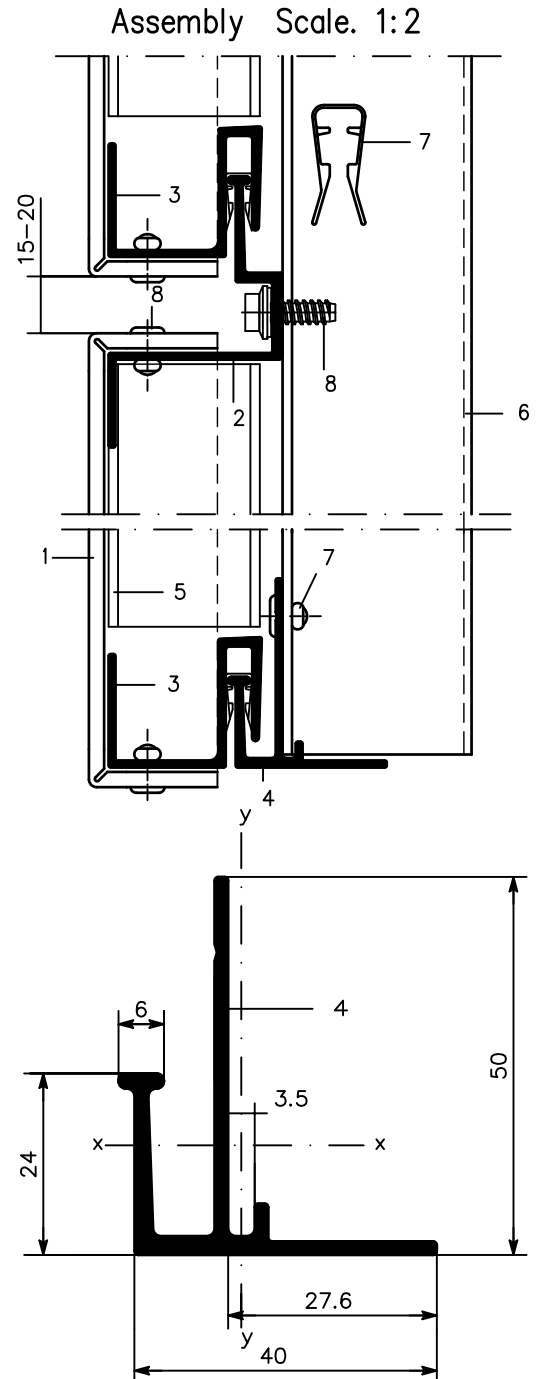
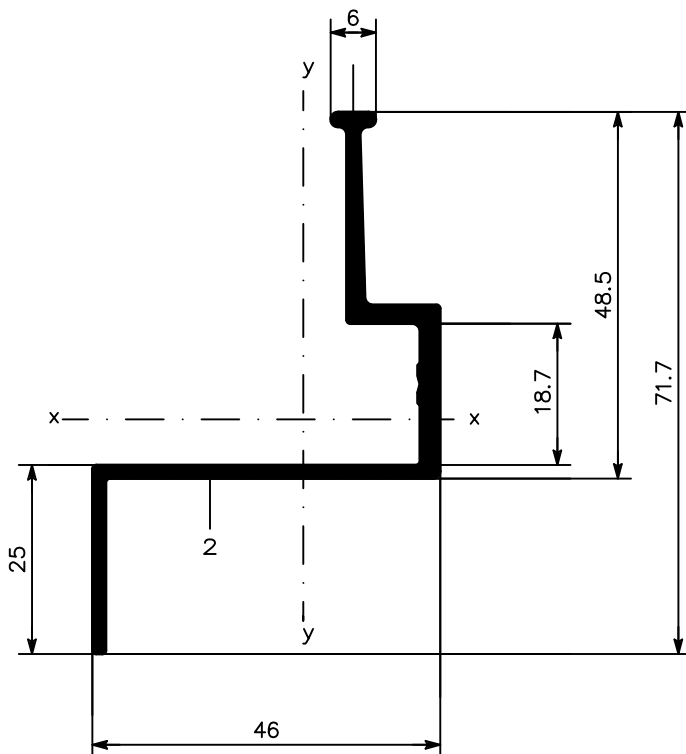
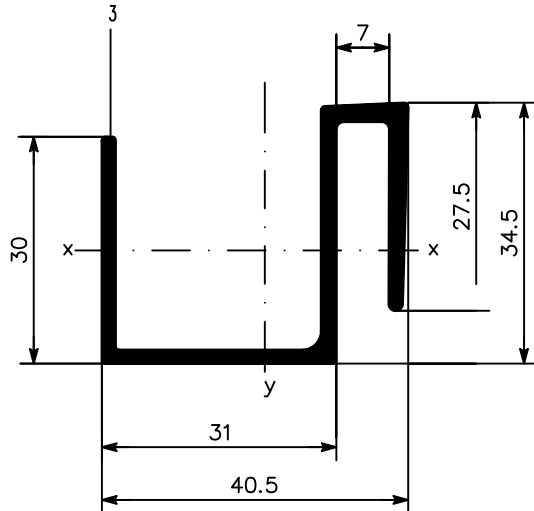
Tray panel corner SZ20      Scale 1:2



ALUCOBOND grooving and punching diagramm Scale 1:1

# Fascia, Tray Panels SZ 20 – Horizontal Panel Layout

Extruded Sections and Accessories – For addresses of suppliers see section 3.4 "Processing"  
On the CD "Architecture in Detail" you'll find in the menu "Processing" a link to open the supplier addresses

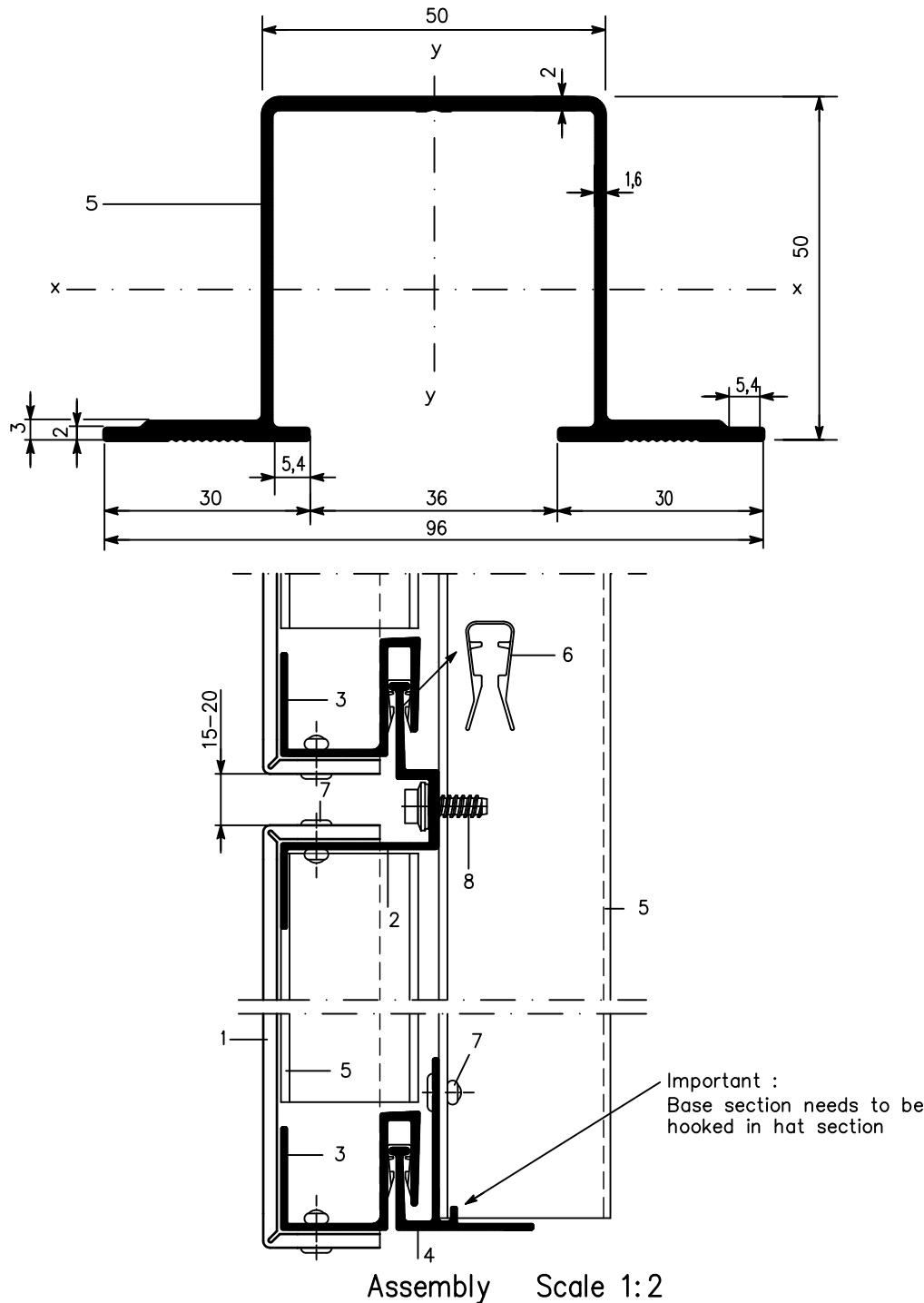


- 1 ALUCOBOND
- 2 Z-Section 40 025, weight 0,727 kg/m periphery 258 mm  
 $I_x = 8,12 \text{ cm}^4$ ,  $W_x = 2,20 \text{ cm}^3$ ,  $I_y = 6,80 \text{ cm}^4$ ,  $W_y = 2,42 \text{ cm}^3$
- 3 S-Section 44 024, weight 0,667 kg/m periphery 251 mm  
 $I_x = 3,21 \text{ cm}^4$ ,  $W_x = 1,68 \text{ cm}^3$ ,  $I_y = 5,30 \text{ cm}^4$ ,  $W_y = 2,28 \text{ cm}^3$
- 4 Extruded section 44 026 (starter), weight 0,625 kg/m periphery 233 mm  
 $I_x = 4,58 \text{ cm}^4$ ,  $W_x = 1,25 \text{ cm}^3$ ,  $I_y = 2,13 \text{ cm}^4$ ,  $W_y = 0,75 \text{ cm}^3$

\* Available from competent dealer

# Fascia, Tray Panels SZ 20 – Horizontal Panel Layout

Extruded Sections and Accessories – For addresses of suppliers see section 3.4 "Processing"  
On the CD "Architecture in Detail" you'll find in the the menu "Processing" a link to open the supplier addresses



5 Extruded hat section 35 953, weight 1,070 kg/m periphery 405 mm  
 $I_x = 16,31 \text{ cm}^4$ ,  $W_x = 5,81 \text{ cm}^3$ ,  $I_y = 28,08 \text{ cm}^4$ ,  $W_y = 5,85 \text{ cm}^3$

6 Plastic clip SZ 20 (Length: 40 mm)

7 Aluminium-blind rivet, with stainless steel mandrel, 5 mm dia., head-dia. 11 mm  
 Rivetable thickness = total material thickness plus 2 mm

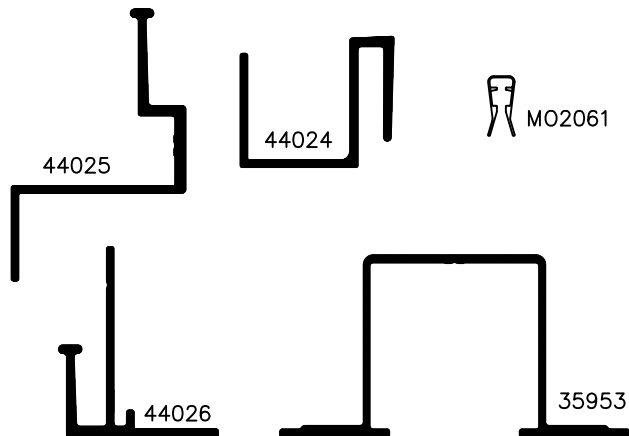
8 Fascia screw JZ3-ZT, dia. 6.3 mm,  
 stainless steel with sealing washer 14 mm

\* Available from competent dealer

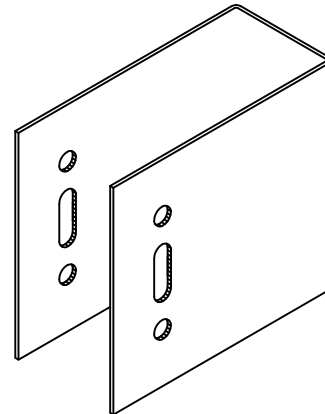
## Fascia, Tray Panels SZ 20 – Horizontal Panel Layout

Extruded Sections and Accessories – For addresses of suppliers see section 3.4 "Processing"  
On the CD "Architecture in Detail" you'll find in the menu "Processing" a link to open the supplier addresses

### Extruded aluminium sections for System SZ 20 and plastic clip



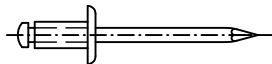
### Wall bracket/substructure



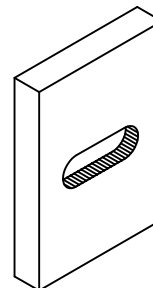
### Alu-blind-rivet with painted head

with stainless steel mandrel

dia. 5 mm, head-dia. 11 or 14 mm



### Plastic board for thermal separation of wall bracket



### Self-tapping screw EJOT JZ3-ZT

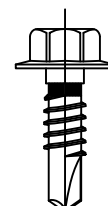
Cylinder head with TORX socket T30

Dia. 6.3 mm, stainless steel  
with stainless steel sealing washer 14 mm  
or comparable screw



### Self drilling screw EJOT JT4-3H/5-5.5x19

for connection of wall brackets with bearing sections.  
Dia. 5.5 mm, head dia. 13 mm, stainless steel

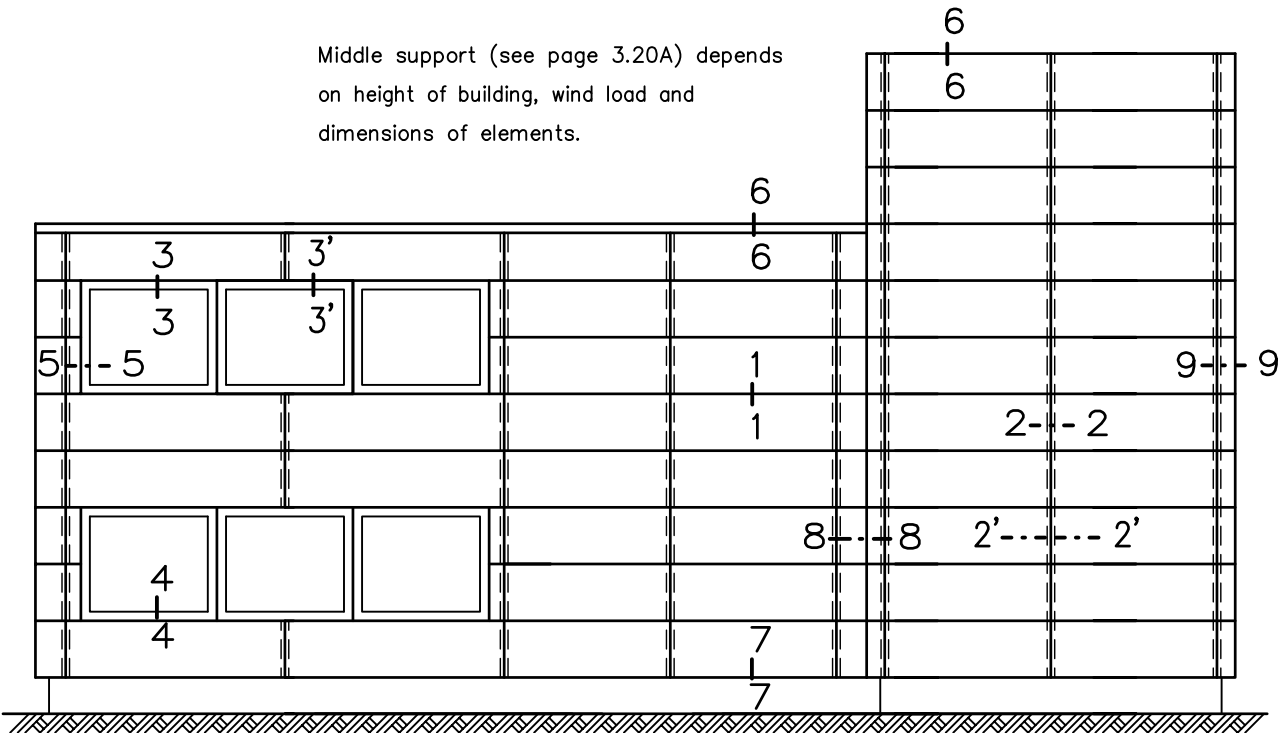


ALUCOBOND®

Fascia, Tray Panels SZ 20 – Horizontal Panel Layout

Survey

Key elevation

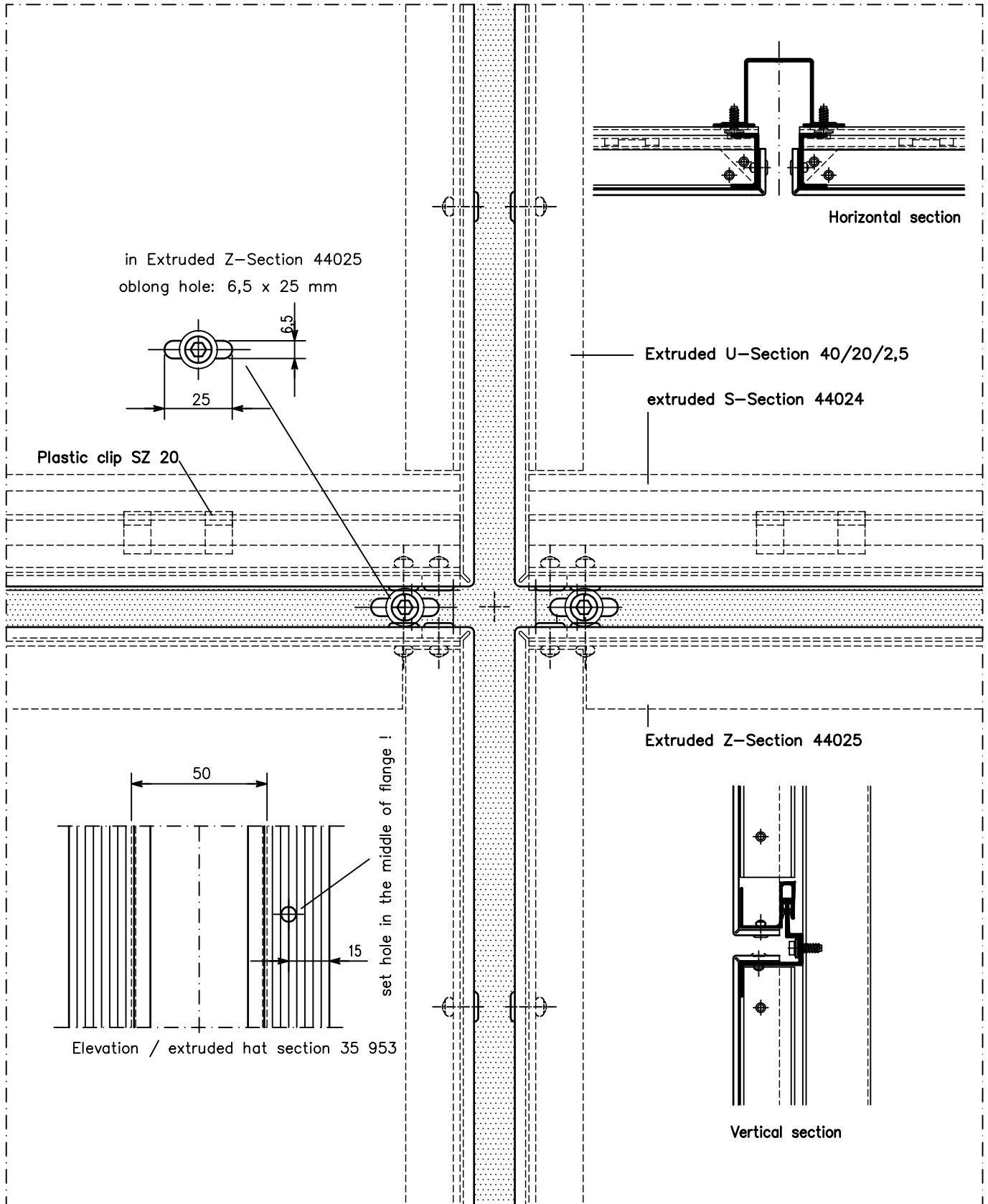


Horizontal Panel Layout	3.2	Cross Joint/Elevation	
	3.10	Horizontal joint	Section 1–1
	3.20	Vertical joint	2–2
	3.30	Window head	3–3
	3.40	Window sill	4–4
	3.50	Window jamb	5–5
	3.60	Parapet return	6–6
	3.70	Lower cladding end	7–7
	3.80	Corner segment/Inner corner	8–8
	3.90	Corner segment/Outer corner	9–9

# Fascia, Tray Panels SZ 20 – Horizontal Panel Layout

Cross joint/Elevation Scale 1:2

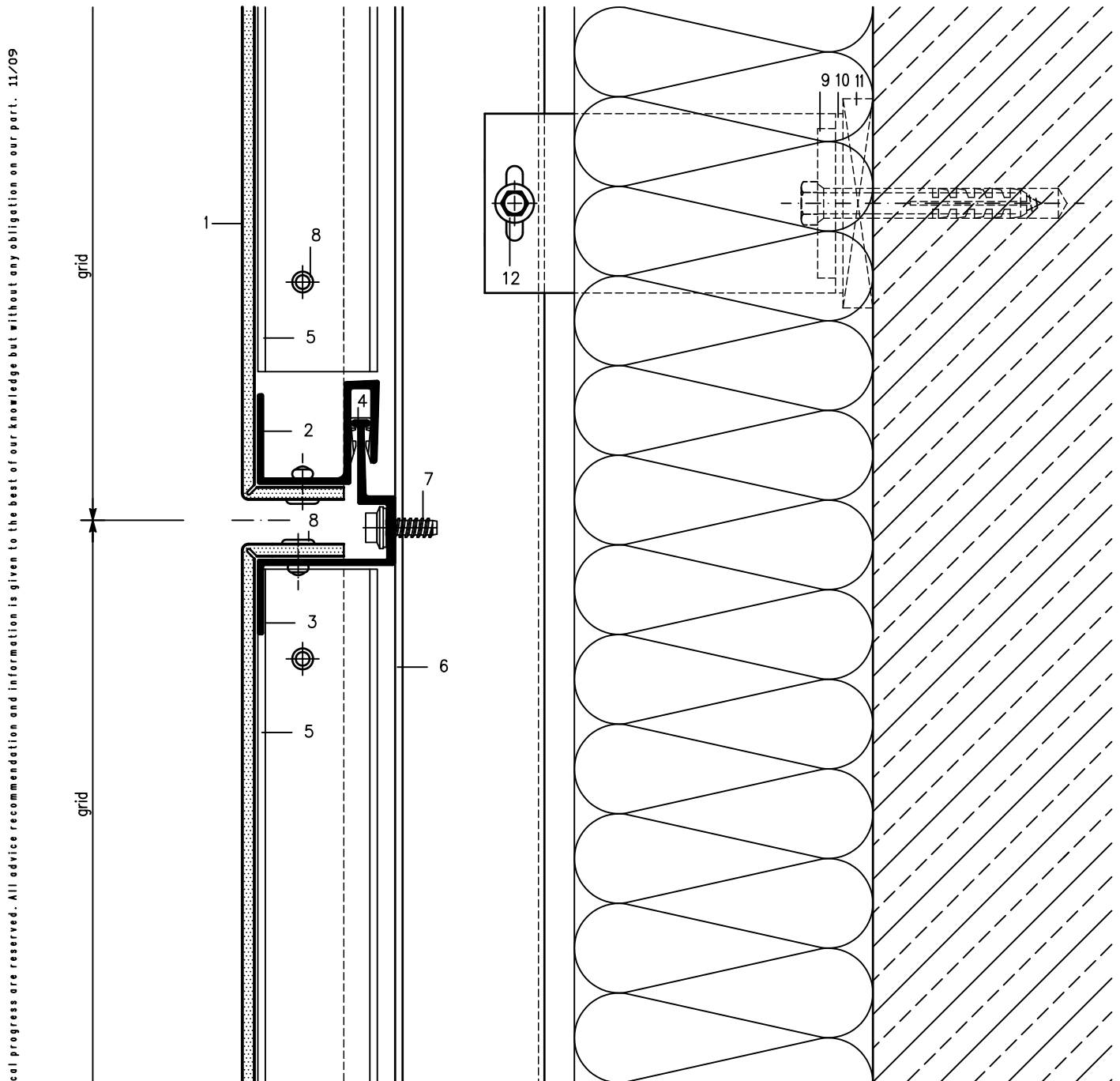
Product changes in the sense of a technical progress are reserved. All advice recommendation and information is given to the best of our knowledge but without any obligation on our part. 11/09





# Fascia, Tray Panels SZ 20 – Horizontal Panel Layout

Horizontal Joint (Section 1-1) Scale 1:2



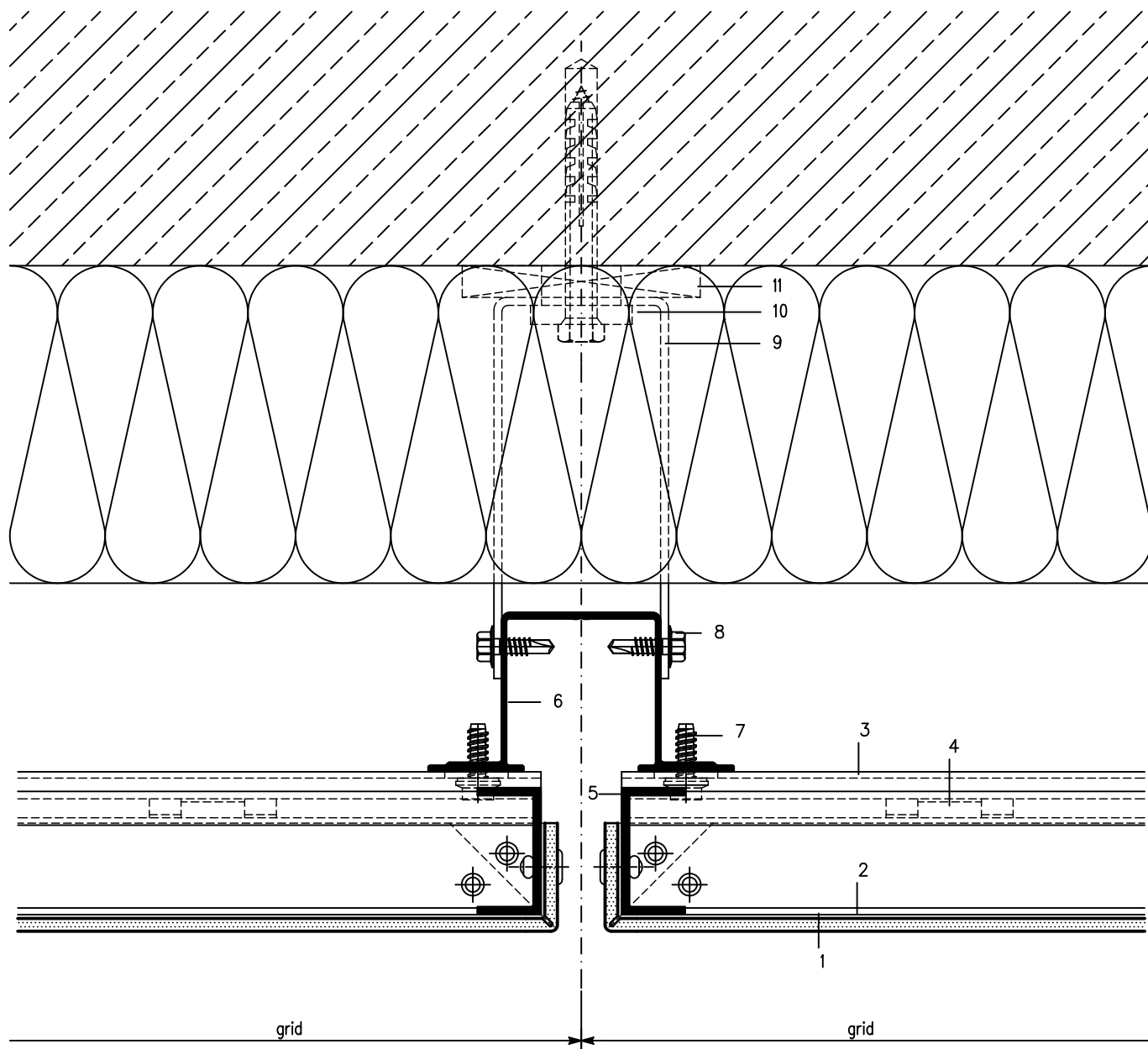
- 1 ALUCOBOND
- 2 Extruded S-Section 44024
- 3 Extruded Z-Section 44025
- 4\* Plastic clip SZ 20
- 5 Extruded U-Section 40/20/2,5
- 6 Extruded hat section 35 953

- 7\* Fascia screw JZ3-ZT, dia. 6.3 mm, stainless steel with sealing washer 14 mm
- 8\* Aluminium-blind rivet
- 9\* Wall bracket
- 10 Extruded Al-liner
- 11\* Plastic board (thermal separation)
- 12\* Self drilling screw

\* Available from competent dealer

# Fascia, Tray Panels SZ 20

Vertical Joint (Section 2-2) Scale 1:2



- 1 ALUCOBOND
- 2 Extruded S-Section 44024
- 3 Extruded Z-Section 44025
- 4\* Plastic clip SZ 20
- 5 Extruded U-Section 40/20/2,5
- 6 Extruded hat section 35 953

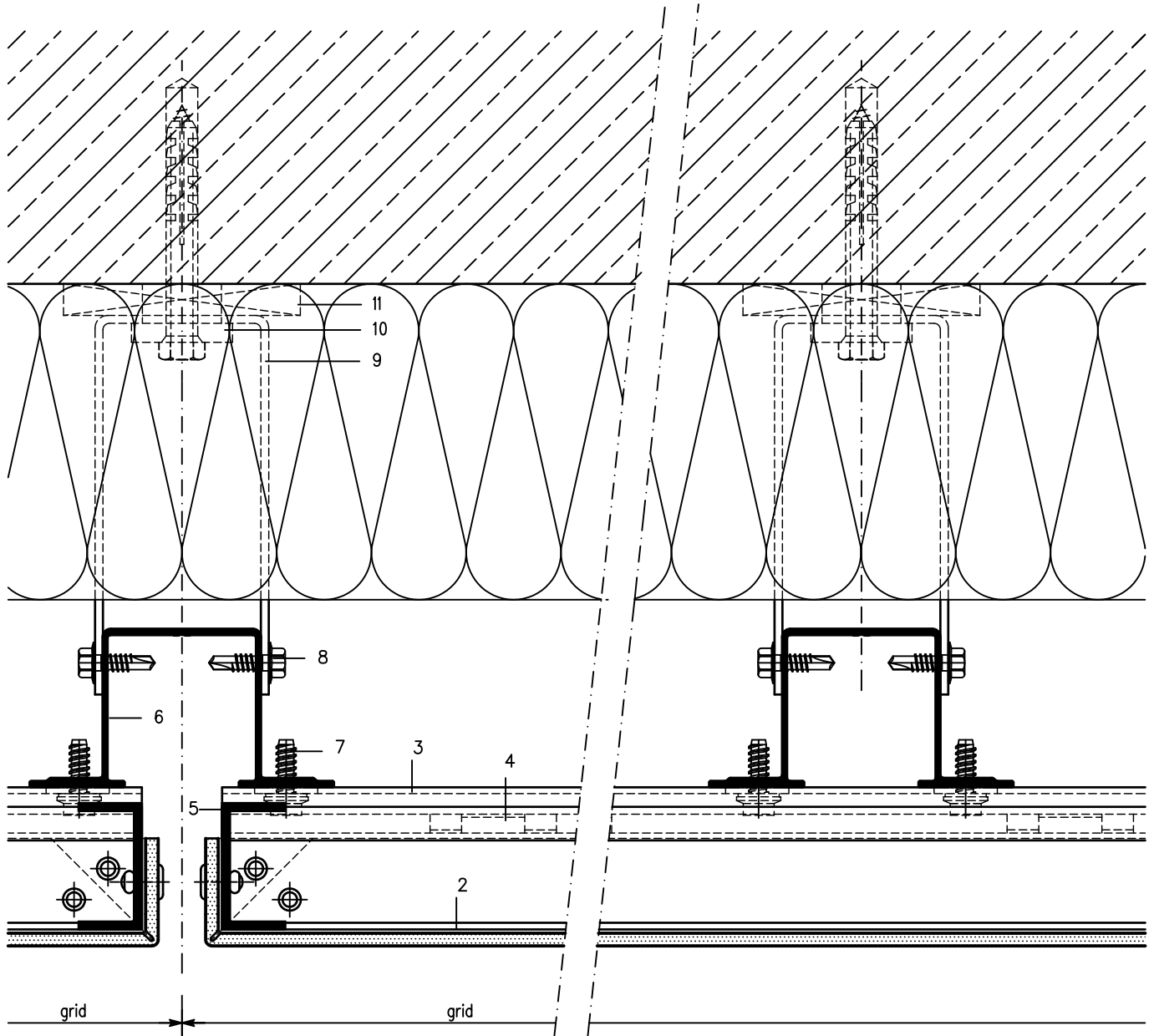
- 7\* Fascia screw JZ3-ZT, dia. 6.3 mm, stainless steel with sealing washer 14 mm
- 8\* Self drilling screw
- 9\* Wall bracket
- 10 Extruded Al-liner
- 11\* Plastic board (thermal separation)

\* Available from competent dealer

# Fascia, Tray Panels SZ 20 – Horizontal Panel Layout

Vertical Joint / with Middle Support (Section 2'-2') Scale 1:2

Product changes in the sense of a technical progress are reserved. All advice recommendation and information is given to the best of our knowledge but without any obligation on our part. 11/09



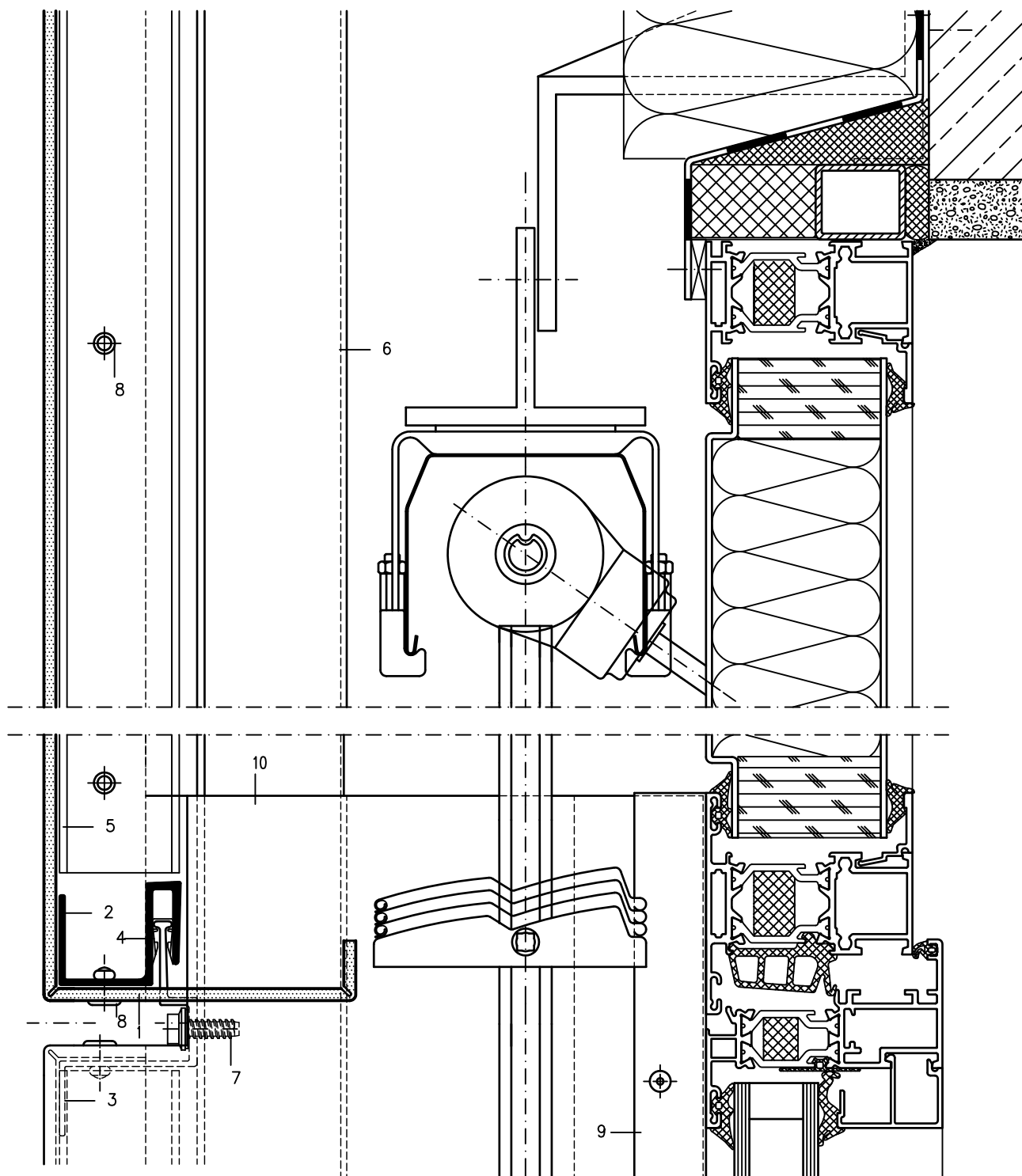
- 1 ALUCOBOND
- 2 Extruded S-Section 44024
- 3 Extruded Z-Section 44025
- 4\* Plastic clip SZ 20
- 5 Extruded U-Section 40/20/2,5
- 6 Extruded hat section 35 953

- 7\* Fascia screw JZ3-ZT, dia. 6.3 mm, stainless steel with sealing washer 14 mm
- 8\* Self drilling screw
- 9\* Wall bracket
- 10 Extruded Al-liner
- 11\* Plastic board (thermal separation)

\* Available from competent dealer

# Fascia, Tray Panels SZ 20 – Horizontal Panel Layout

Window Head (Section 3–3, Area of Reveal) Scale 1:2



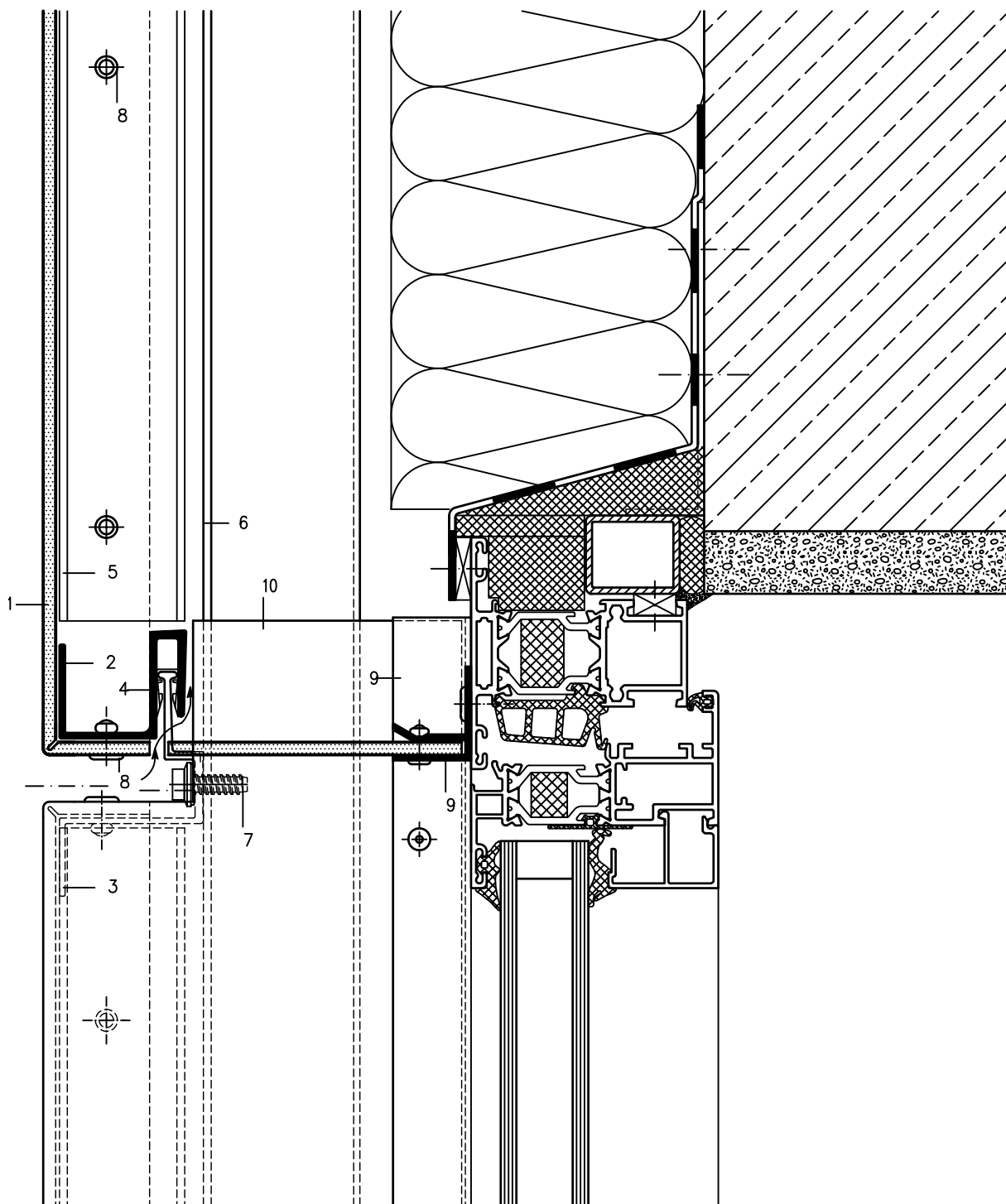
- 1 ALUCOBOND
- 2 Extruded S-Section 44024
- 3 Extruded Z-Section 44025
- 4\* Plastic clip SZ 20
- 5 Extruded U-Section 40/20/2,5

- 6 Extruded hat section 35 953
- 7\* Fascia screw JZ3-ZT, dia. 6.3 mm, stainless steel with sealing washer 14 mm
- 8\* Aluminium-blind rivet
- 9\* Extruded window connecting section 38 464
- 10 Reveal

\* Available from competent dealer

# Fascia, Tray Panels SZ 20 – Horizontal Panel Layout

Window Head (Section 3–3, Area of Reveal) Scale 1:2



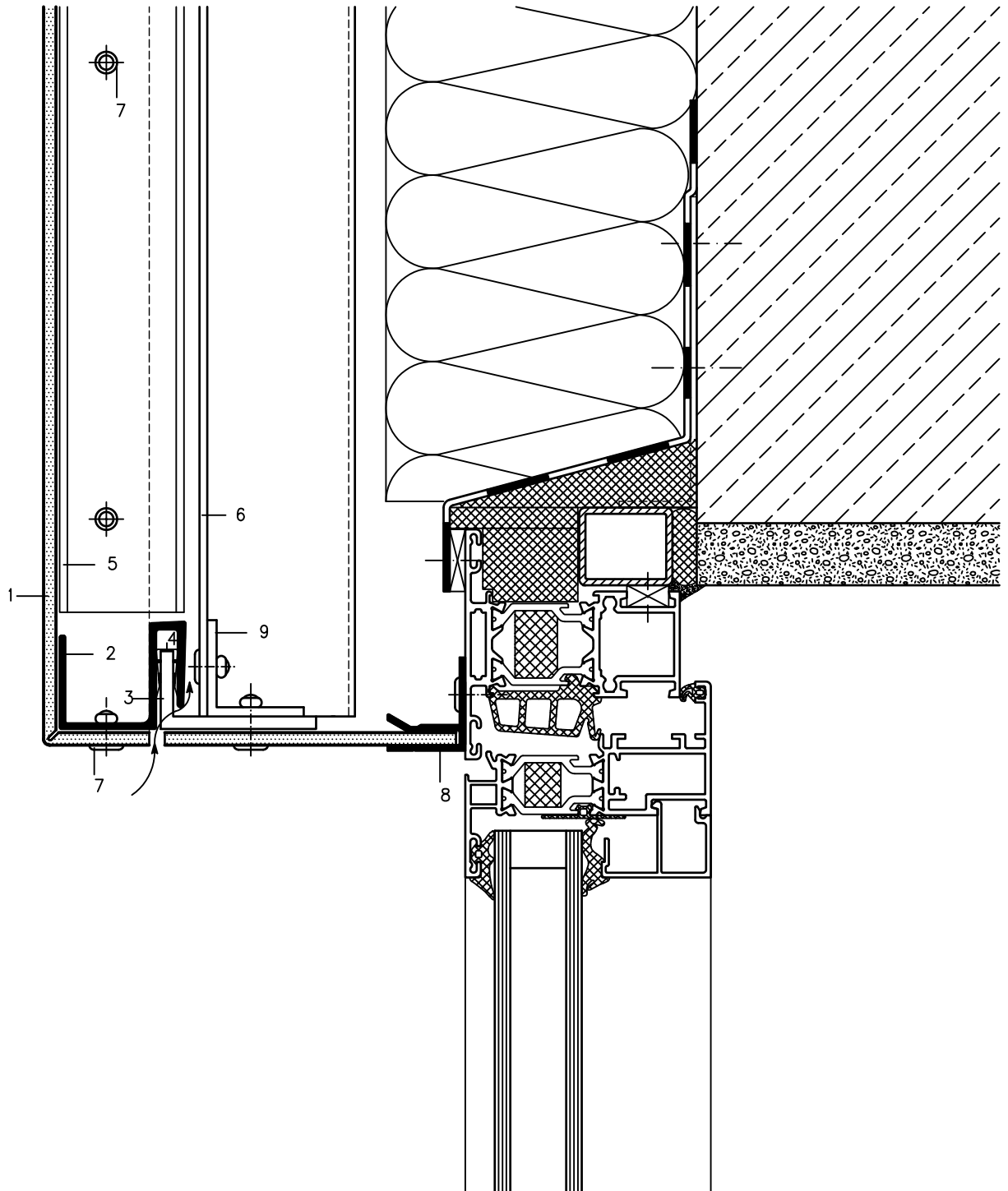
- 1 ALUCOBOND
- 2 Extruded S-Section 44024
- 3 Extruded Z-Section 44025
- 4\* Plastic clip SZ 20
- 5 Extruded U-Section 40/20/2,5
- 6 Extruded hat section 35 953

- 7\* Fascia screw JZ3-ZT, dia. 6.3 mm, stainless steel with sealing washer 14 mm
- 8\* Aluminium-blind rivet
- 9 Extruded window connecting section 38 464
- 10 Reveal

\* Available from competent dealer

# Fascia, Tray Panels SZ 20 – Horizontal Panel Layout

Window Head (Section 3'-3', Central Sector) Scale 1:2



- 1 ALUCOBOND
- 2 Extruded S-Section 44024
- 3 Extruded L-section 50/25/4 (length=50 mm)
- 4\* Plastic clip SZ 20
- 5 Extruded U-Section 40/20/2,5

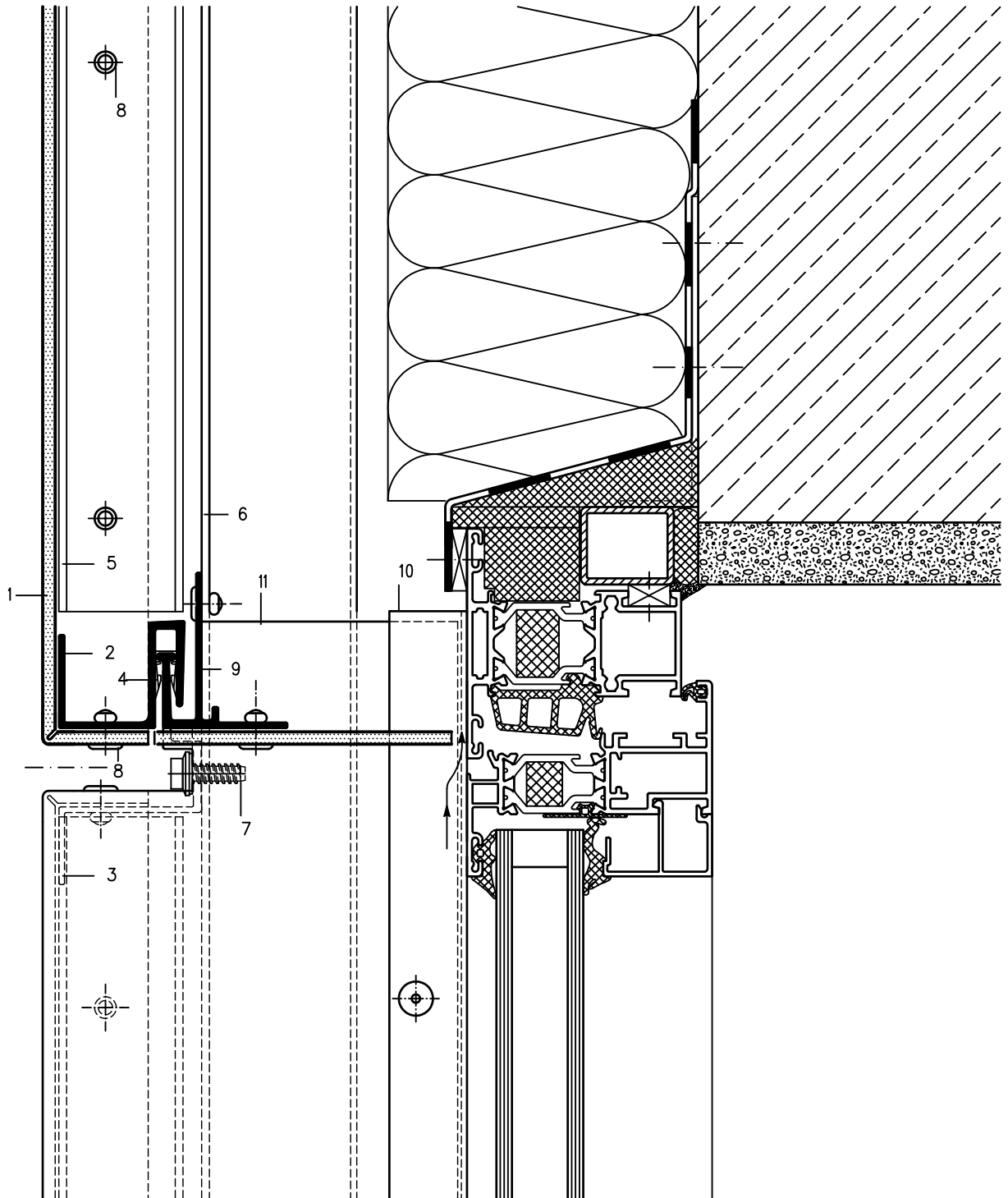
- 6 Extruded hat section 35 953
- 7\* Aluminium-blind rivet
- 8 Extruded window connecting section 38 464
- 9 Extruded L-section 30/30/3 (short piece)

\* Available from competent dealer

# Fascia, Tray Panels SZ 20 – Horizontal Panel Layout

Window Head (Section 3–3, Area of Reveal) Scale 1:2

Remark: Upper web of section 44 025 is to be shortened (element of reveal)



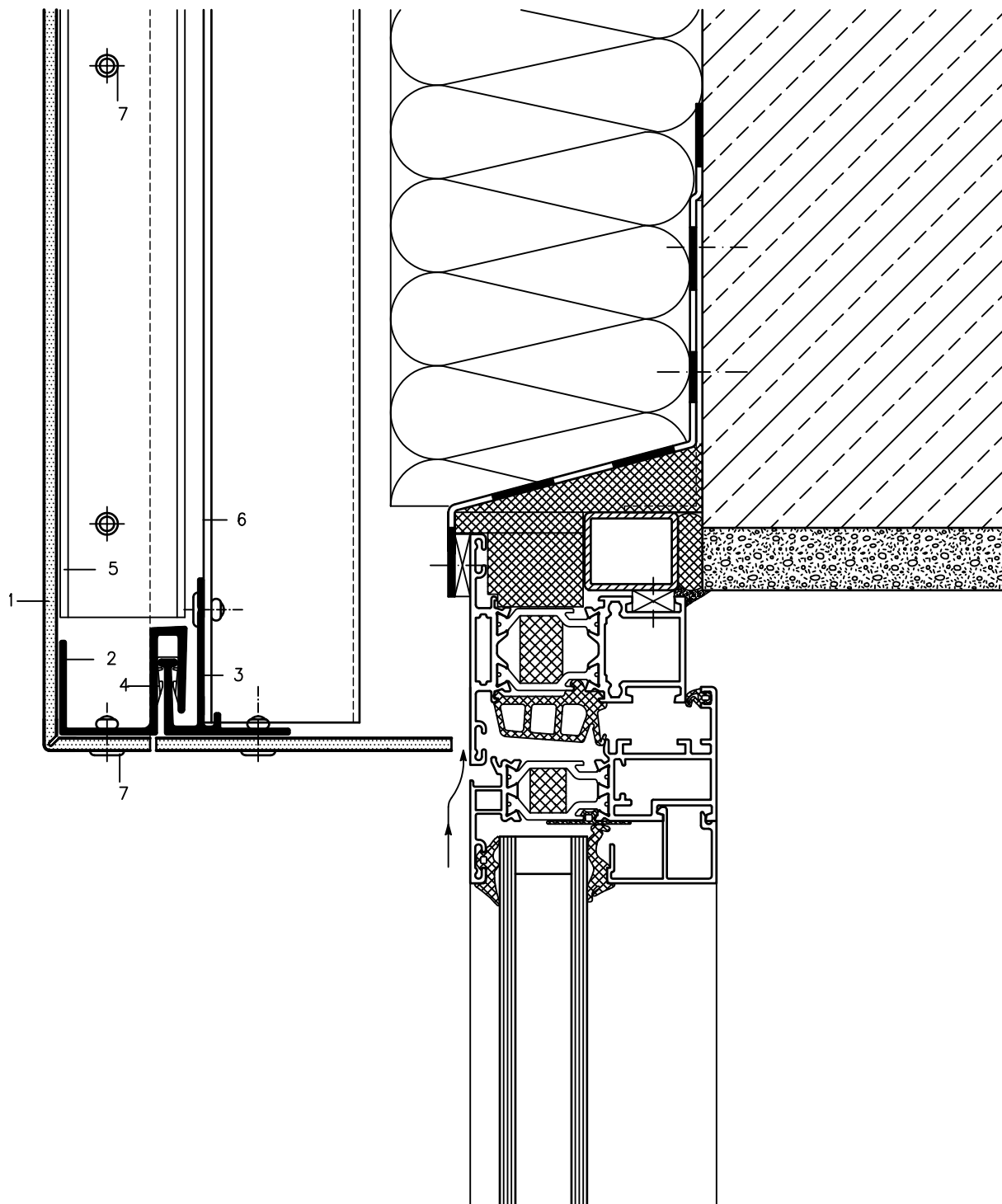
- 1 ALUCOBOND
- 2 Extruded S-Section 44024
- 3 Extruded base section 44025
- 4\* Plastic clip SZ 20
- 5 Extruded U-Section 40/20/2,5
- 6 Extruded hat section 35 953

- 7\* Fascia screw JZ3-ZT, dia. 6.3 mm, stainless steel with sealing washer 14 mm
- 8\* Aluminium-blind rivet
- 9 Extruded base section 44026
- 10 Extruded window connecting section 38 464
- 11 Reveal

\* Available from competent dealer

# Fascia, Tray Panels SZ 20 – Horizontal Panel Layout

Window Head (Section 3'-3', Central Sector) Scale 1:2



- 1 ALUCOBOND
- 2 Extruded S-Section 44024
- 3 Extruded base section 44026
- 4\* Plastic clip SZ 20
- 5 Extruded U-Section 40/20/2,5

- 6 Extruded hat section 35 953
- 7\* Aluminium-blind rivet

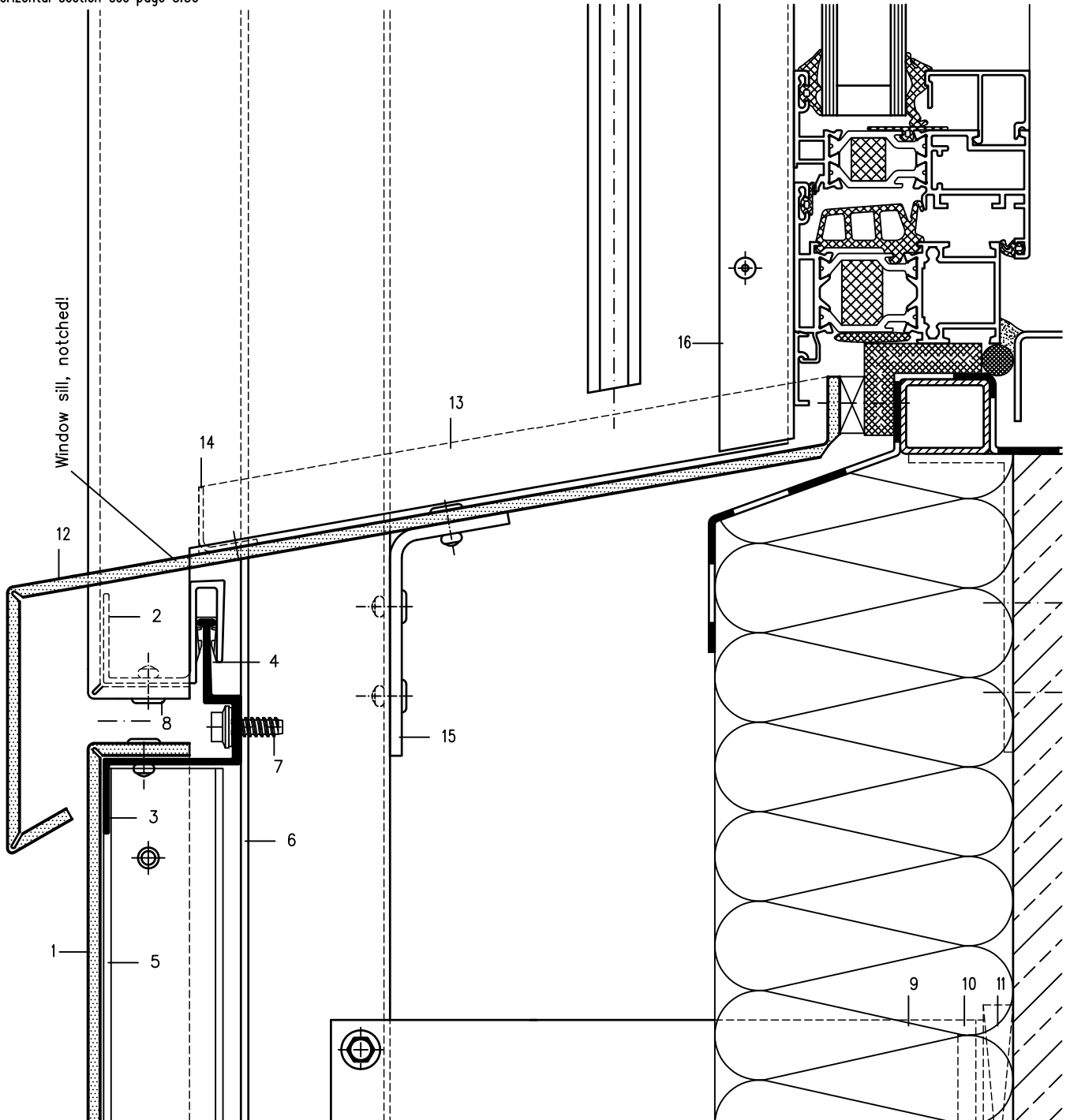
\* Available from competent dealer



# Fascia, Tray Panels SZ 20 – Horizontal Panel Layout

Window Sill (Section 4–4) Scale 1:2

Horizontal section see page 3.50



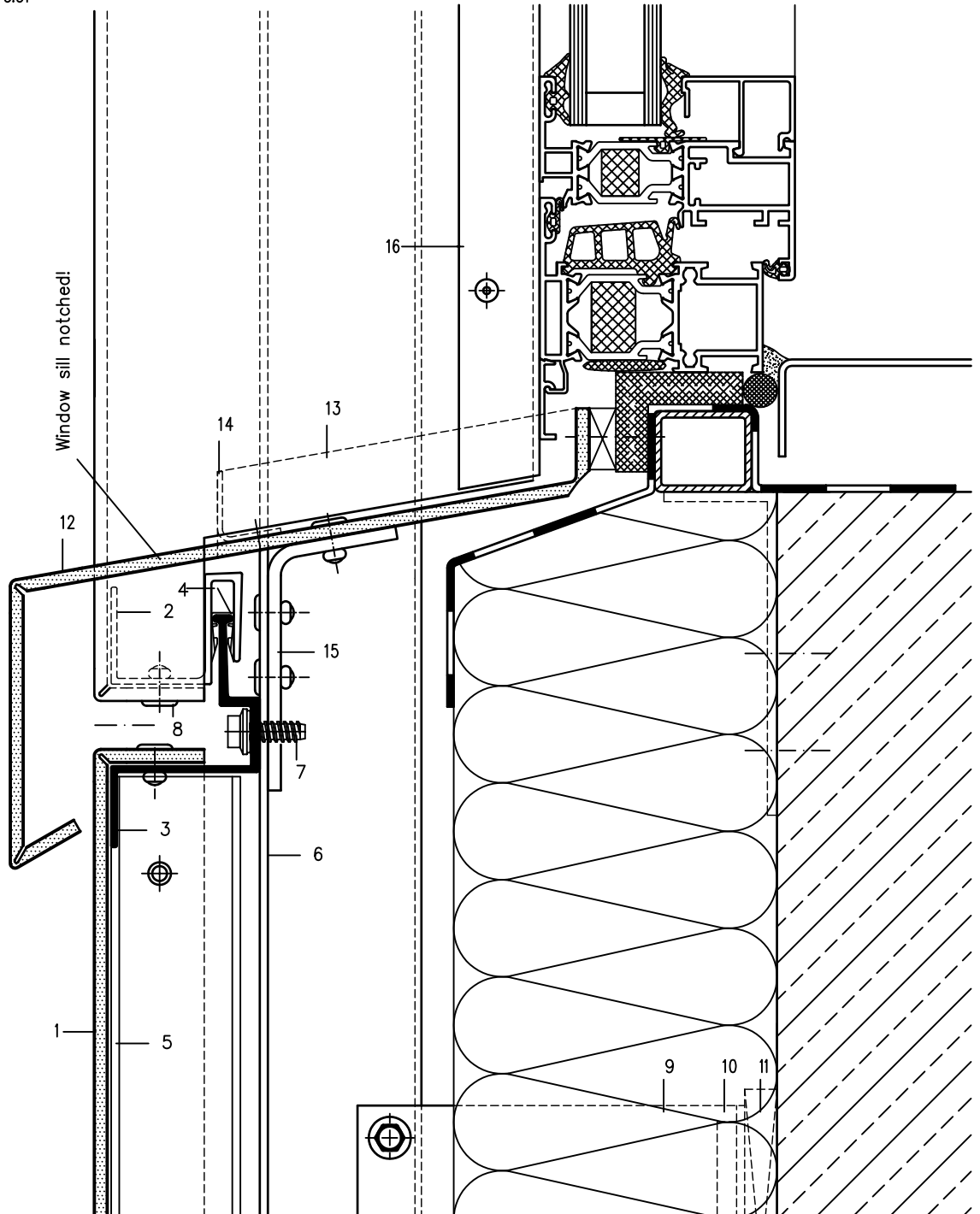
- 1 ALUCOBOND
- 2 Extruded S-Section 44024
- 3 Extruded Z-Section 44025
- 4\* Plastic clip SZ 20
- 5 Extruded U-Section 40/20/2,5
- 6 Extruded hat section 35 953
- 7\* Fascia screw JZ3-ZT, dia. 6.3 mm, stainless steel with sealing washer 14 mm
- \* Available from competent dealer

- 8\* Aluminium-blind rivet
- 9\* Wall bracket
- 10 Extruded Al-liner
- 11\* Plastic board (thermal separation)
- 12 ALUCOBOND window sill
- 13 ALUCOBOND side folding (window sill)
- 14 Folded Al-sheet (water drainage)
- 15 Fixing angle (Support for window sill)
- 16 Extruded window connecting section 38 464

# Fascia, Tray Panels SZ 20 – Horizontal Panel Layout

Window Sill (Section 4–4) Scale 1:2

Horizontal section see page 3.51



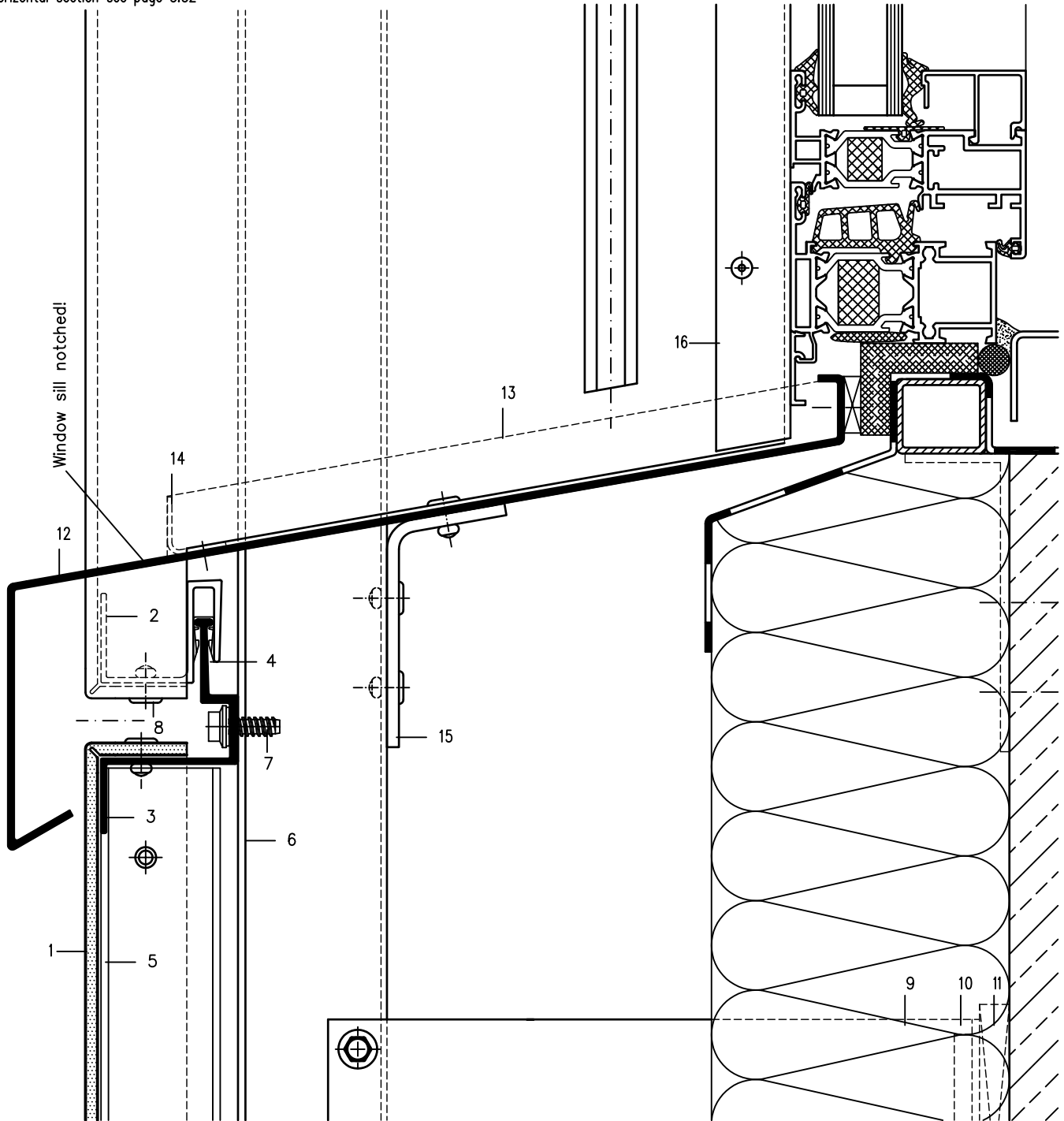
- 1 ALUCOBOND
- 2 Extruded S-Section 44024
- 3 Extruded Z-Section 44025
- 4\* Plastic clip SZ 20
- 5 Extruded U-Section 40/20/2,5
- 6 Extruded hat section 35 953
- 7\* Fascia screw JZ3-ZT, dia. 6.3. mm, stainless steel with sealing washer 14 mm
- \* Available from competent dealer

- 8\* Aluminium-blind rivet
- 9\* Wall bracket
- 10 Extruded Al-liner
- 11\* Plastic board (thermal separation)
- 12 ALUCOBOND Window sill
- 13 ALUCOBOND side folding (window sill)
- 14 Folded Al-sheet (water drainage)
- 15 Fixing angle (Support for window sill)
- 16 Extruded window connecting section 38 464

# Fascia, Tray Panels SZ 20 – Horizontal Panel Layout

Window Sill (Section 4–4) Scale 1:2

Horizontal section see page 3.52



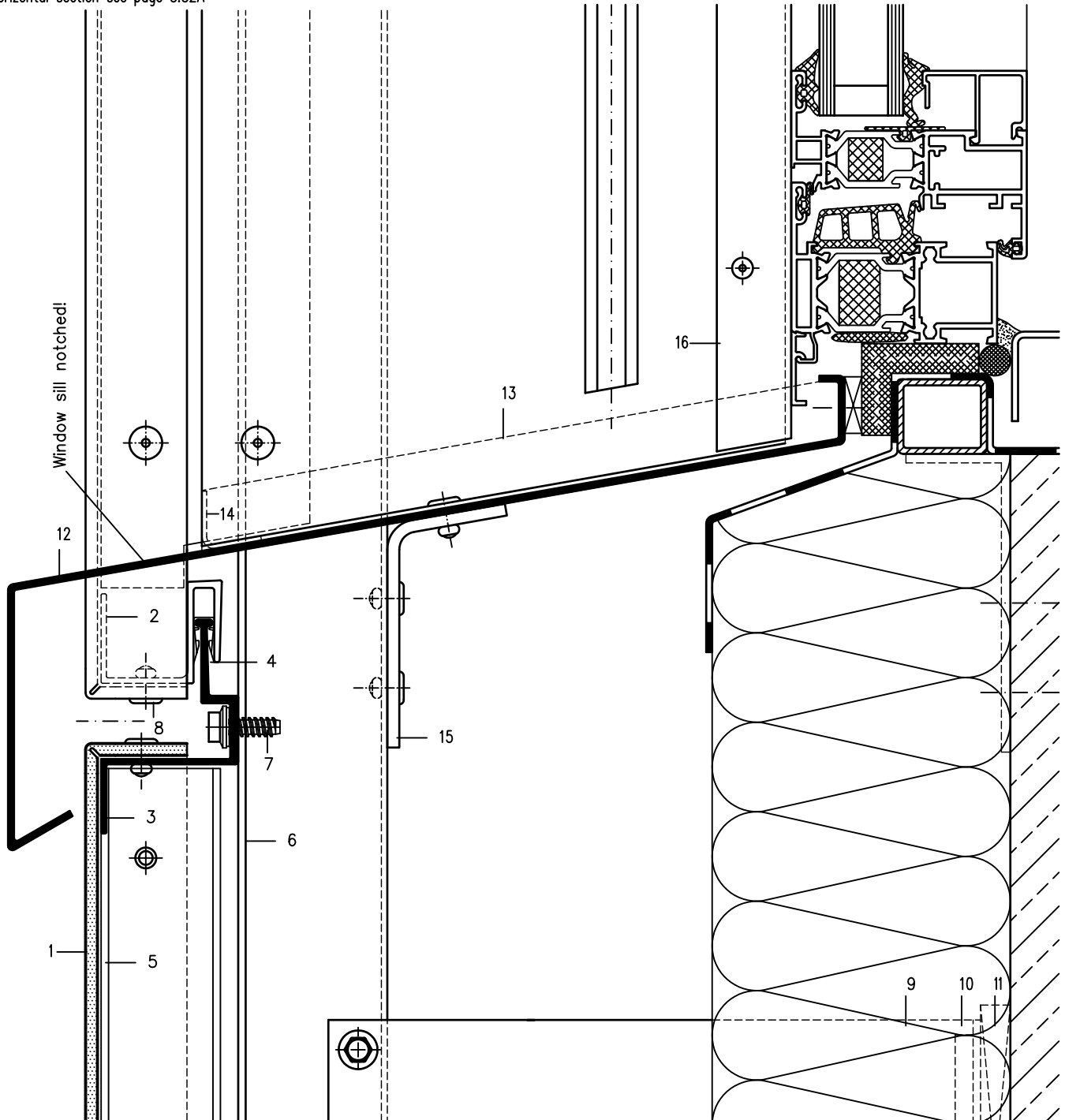
- 1 ALUCOBOND
- 2 Extruded S-Section 44024
- 3 Extruded Z-Section 44025
- 4\* Plastic clip SZ 20
- 5 Extruded U-Section 40/20/2,5
- 6 Extruded hat section 35 953
- 7\* Fascia screw JZ3-ZT, dia. 6.3 mm, stainless steel with sealing washer 14 mm
- \* Available from competent dealer

- 8\* Aluminium-blind rivet
- 9\* Wall bracket
- 10 Extruded Al-liner
- 11\* Plastic board (thermal separation)
- 12 Window sill-shaped aluminium sheet
- 13 ALUCOBOND side folding (window sill)
- 14 Folded Al-sheet (water drainage)
- 15 Fixing angle (Support for window sill)
- 16 Extruded window connecting section 38 464

# Fascia, Tray Panels SZ 20 – Horizontal Panel Layout

Window Sill (Section 4–4) Scale 1:2

Horizontal section see page 3.52A



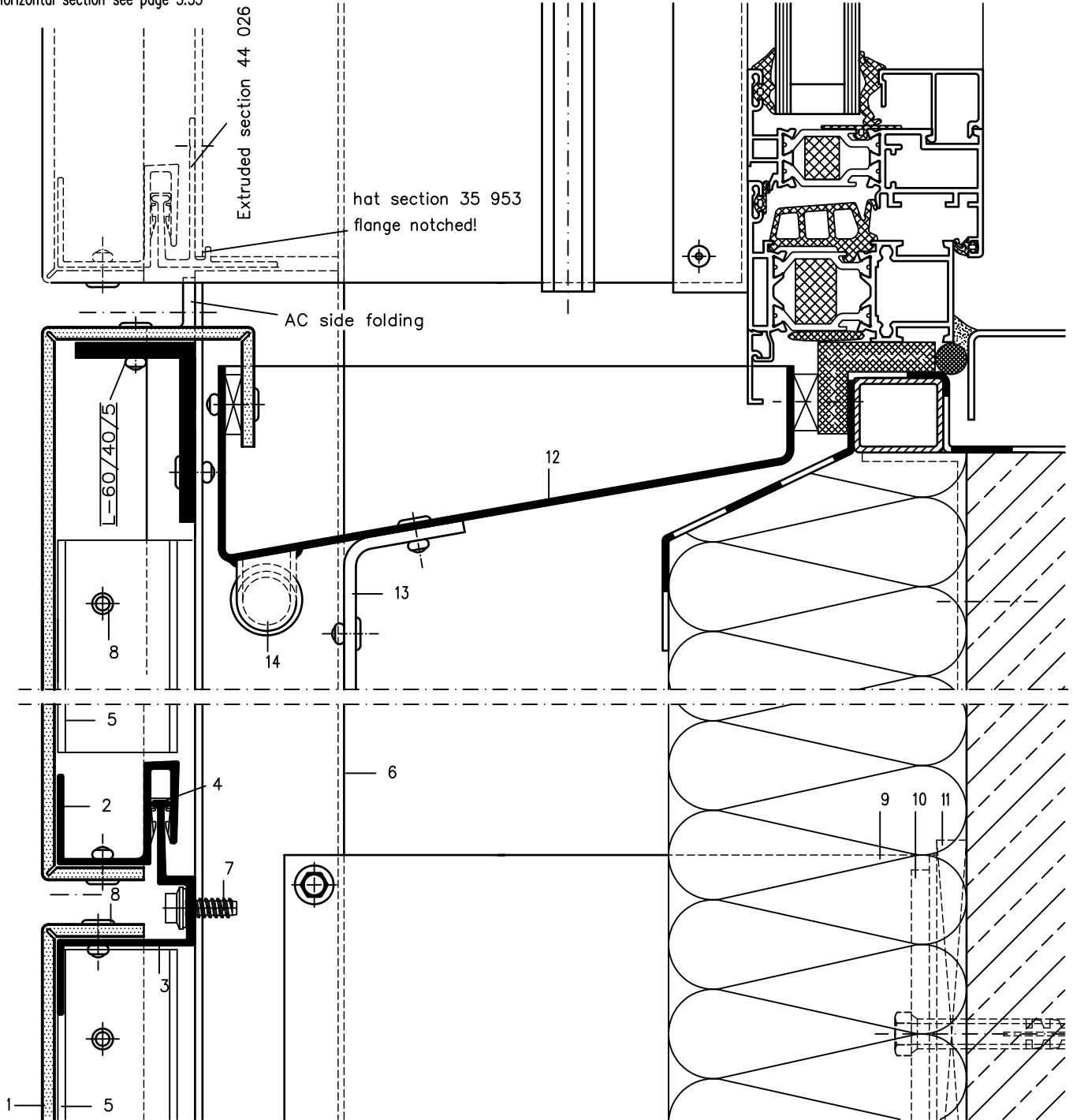
- 1 ALUCOBOND
- 2 Extruded S-Section 44024
- 3 Extruded Z-Section 44025
- 4\* Plastic clip SZ 20
- 5 Extruded U-Section 40/20/2,5
- 6 Extruded hat section 35 953
- 7\* Fascia screw JZ3-ZT, dia. 6.3 mm, stainless steel with sealing washer 14 mm
- \* Available from competent dealer

- 8\* Aluminium-blind rivet
- 9\* Wall bracket
- 10 Extruded Al-liner
- 11\* Plastic board (thermal separation)
- 12 Window sill-shaped aluminium sheet
- 13 ALUCOBOND side folding (window sill)
- 14 Folded Al-sheet (water drainage)
- 15 Fixing angle (Support for window sill)
- 16 Extruded window connecting section 38 464

# Fascia, Tray Panels SZ 20 – Horizontal Panel Layout

Window Sill (Section 4–4) Scale 1:2

Horizontal section see page 3.53



- 1 ALUCOBOND
- 2 Extruded S-Section 44024
- 3 Extruded Z-Section 44025
- 4\* Plastic clip SZ 20
- 5 Extruded U-Section 40/20/2,5
- 6 Extruded hat section 35 953
- 7\* Fascia screw JZ3-ZT, dia. 6.3 mm, stainless steel with sealing washer 14 mm

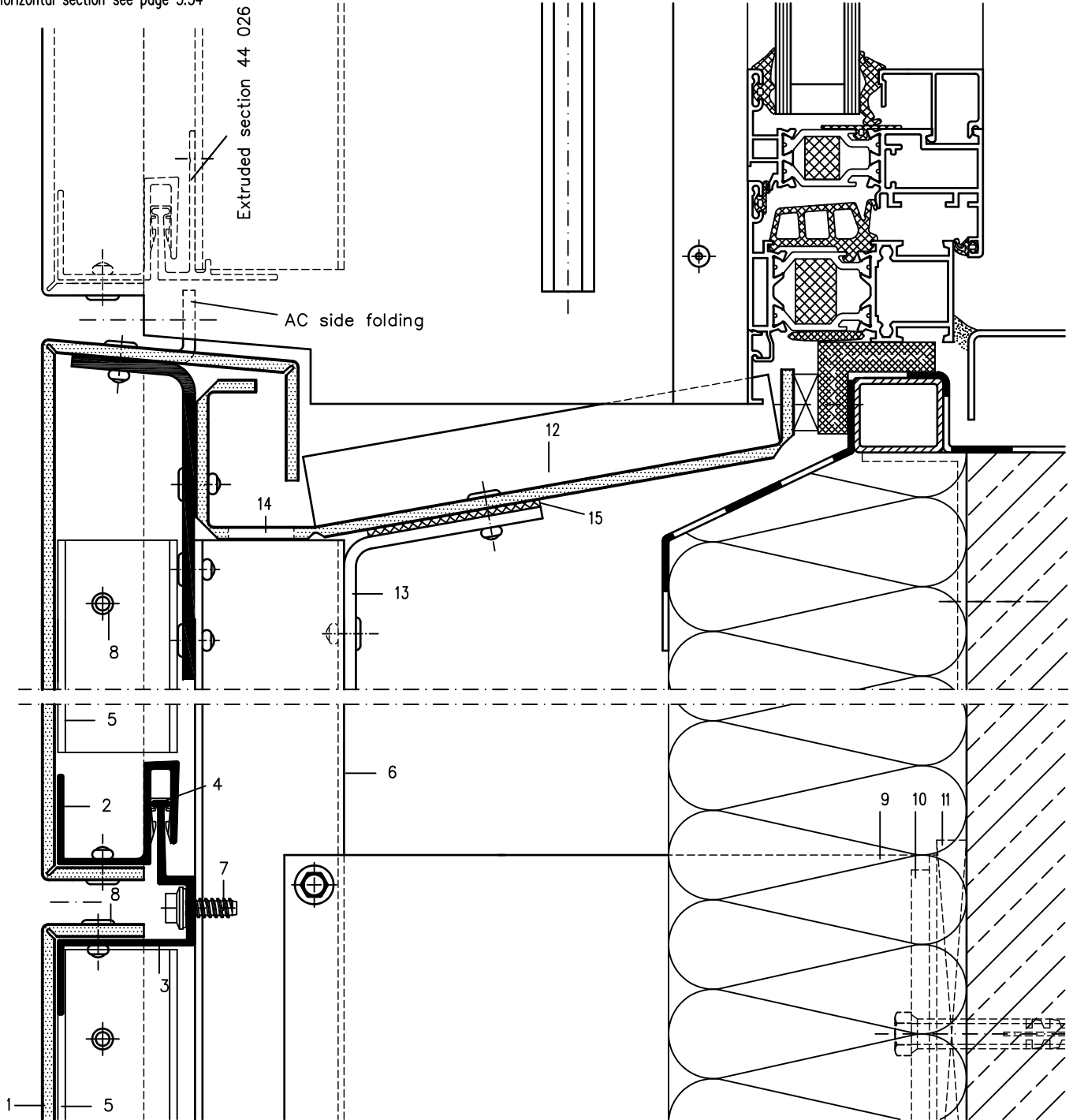
- 8\* Aluminium-blind rivet
- 9\* Wall bracket
- 10 Extruded Al-liner
- 11\* Plastic board (thermal separation)
- 12 Window sill-shaped aluminium sheet
- 13 Fixing angle (Support for window sill)
- 15 Sealing tape

\* Available from competent dealer

# Fascia, Tray Panels SZ 20 – Horizontal Panel Layout

Window Sill (Section 4–4) Scale 1:2

Horizontal section see page 3.54

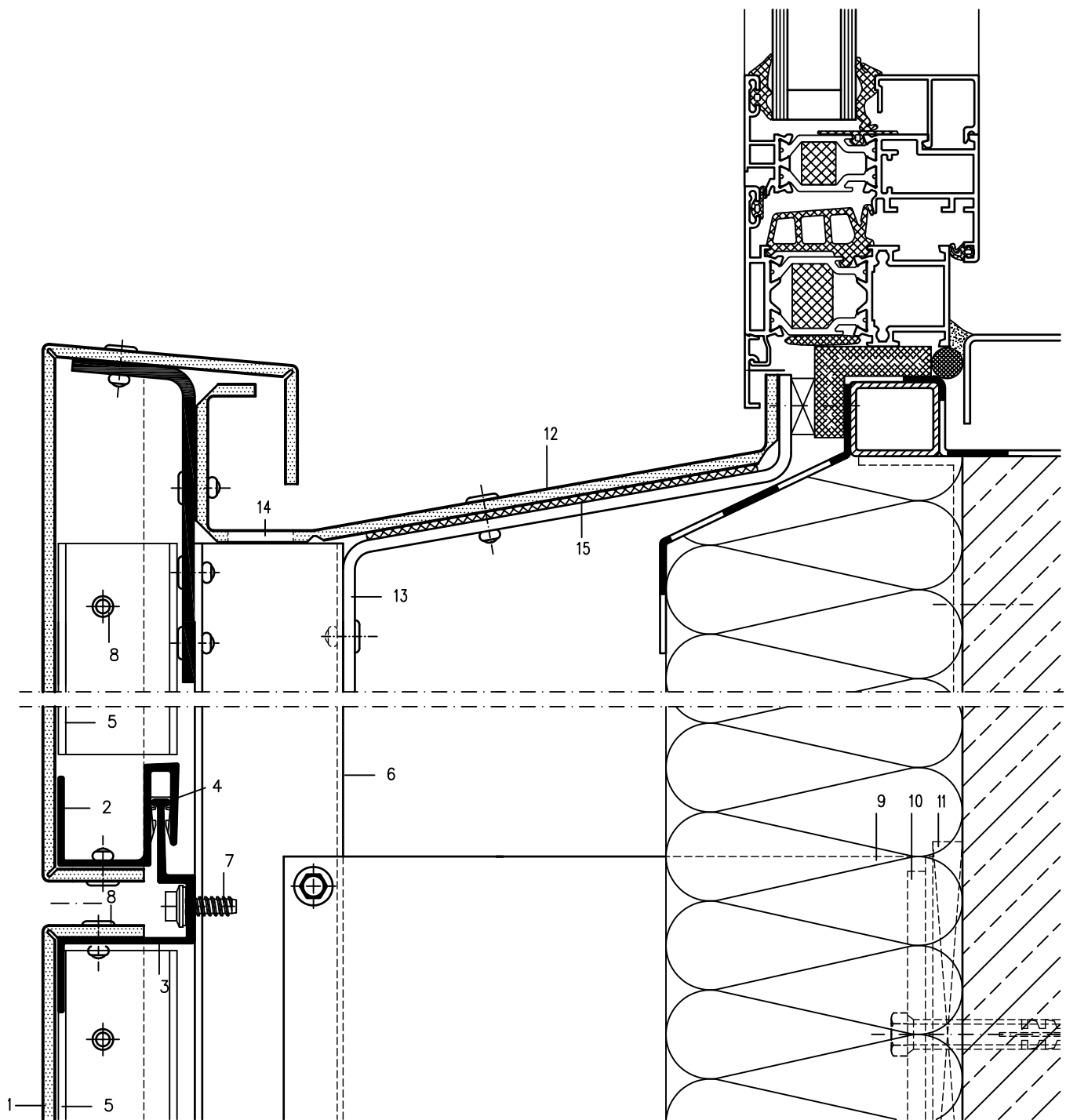


- 1 ALUCOBOND
- 2 Extruded S-Section 44024
- 3 Extruded Z-Section 44025
- 4\* Plastic clip SZ 20
- 5 Extruded U-Section 40/20/2,5
- 6 Extruded hat section 35 953
- 7\* Fascia screw JZ3-ZT, dia. 6.3 mm, stainless steel with sealing washer 14 mm
- \* Available from competent dealer

- 8\* Aluminium-blind rivet
- 9\* Wall bracket
- 10 Extruded Al-liner
- 11\* Plastic board (thermal separation)
- 12 ALUCOBOND window sill
- 13 Fixing angle (Support for window sill)
- 14 Opening for water drainage
- 15 Sealing tape

# Fascia, Tray Panels SZ 20 – Horizontal Panel Layout

Window Sill (Section 4–4 Central Sector) Scale 1:2



- 1 ALUCOBOND
- 2 Extruded S-Section 44024
- 3 Extruded Z-Section 44025
- 4\* Plastic clip SZ 20
- 5 Extruded U-Section 40/20/2,5
- 6 Extruded hat section 35 953
- 7\* Fascia screw JZ3-ZT, dia. 6.3 mm, stainless steel with sealing washer 14 mm

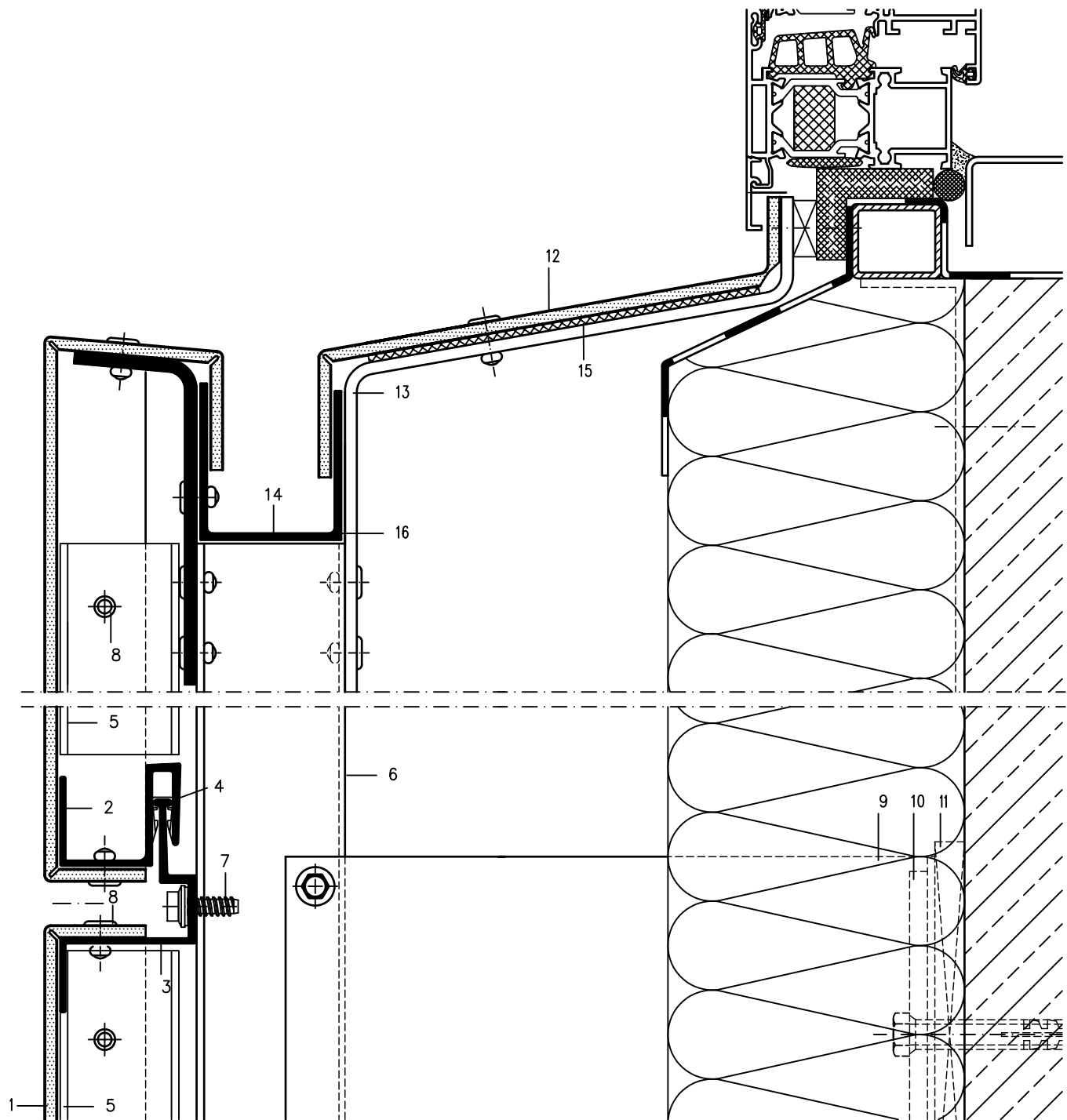
- 8\* Aluminium-blind rivet
- 9\* Wall bracket
- 10 Extruded Al-liner
- 11\* Plastic board (thermal separation)
- 12 ALUCOBOND window sill
- 13 Fixing angle (support window sill)
- 14 Water drainage
- 15 Sealing tape

\* Available from competent dealer

# Facia, Tray Panels Sz 20 – Horizontal Panel Layout

Window Sill (Section 4–4 Central Sector) Scale 1:2

Product changes in the sense of a technical progress are reserved. All advice recommendation and information is given to the best of our knowledge but without any obligation on our part. 11/10



- 1 ALUCOBOND
- 2 Extruded S-Section 44024
- 3 Extruded Z-Section 44025
- 4\* Plastic clip SZ 20
- 5 Extruded U-Section 40/20/2,5
- 6 Extruded hat section 35 953
- 7\* Fascia screw JZ3-ZT, dia. 6.3 mm, stainless steel with sealing washer 14 mm
- \* Available from competent dealer

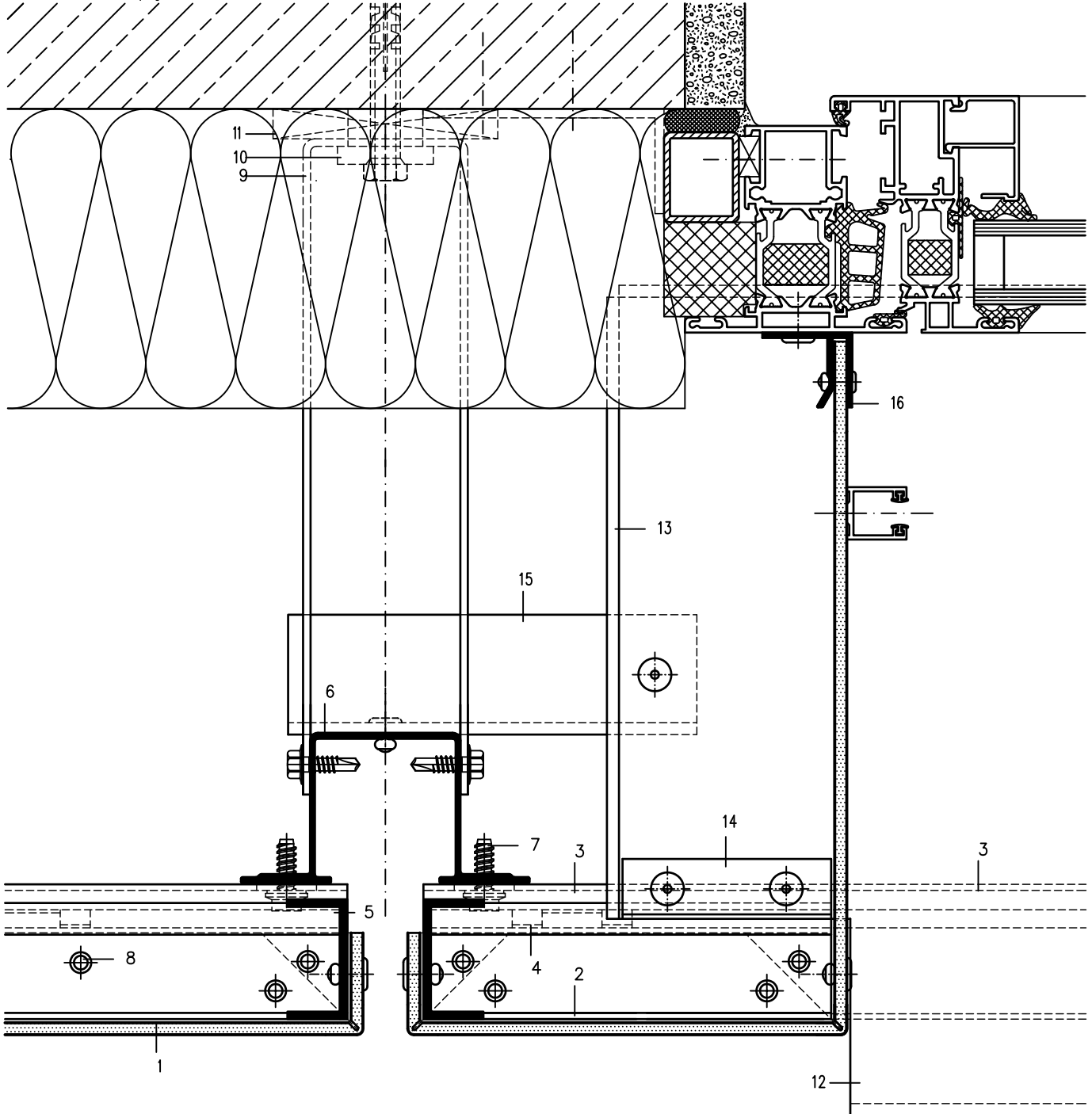
- 8\* Aluminium-blind rivet
- 9\* Wall bracket
- 10 Extruded Al-liner
- 11\* Plastic board (thermal separation)
- 12 ALUCOBOND window sill
- 13 Fixing angle (support window sill)
- 14 Water drainage
- 15 Sealing tape
- 16 Extruded U-section



# Fascia, Tray Panels SZ 20 – Horizontal Panel Layout

Window Jamb (Section 5–5) Scale 1:2

Vertical section see page 3.40

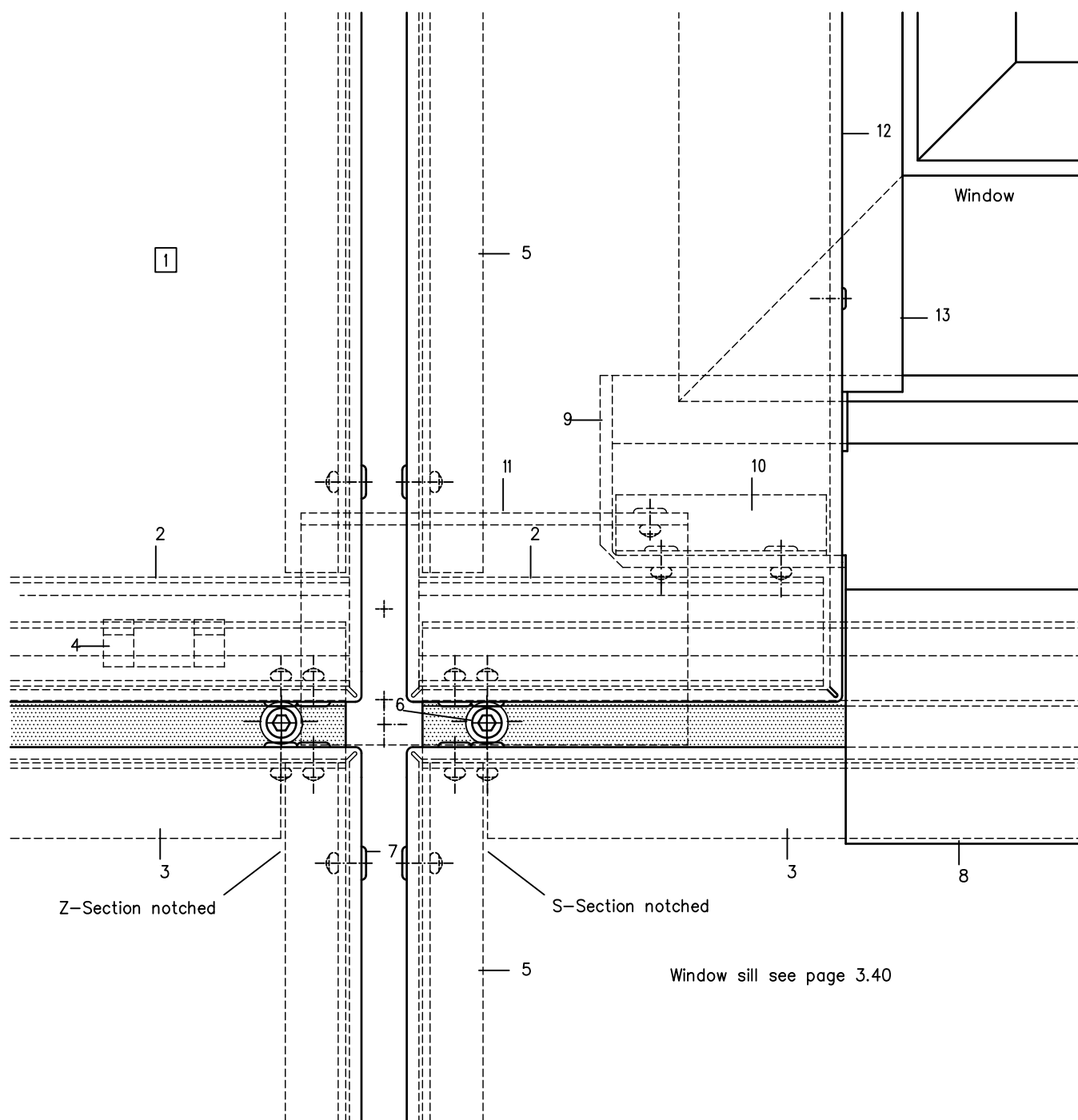


- 1 ALUCOBOND
- 2 Extruded S-Section 44024
- 3 Extruded Z-Section 44025
- 4\* Plastic clip SZ 20
- 5 Extruded U-Section 40/20/2,5
- 6 Extruded hat section 35 953
- 7\* Fascia screw JZ3-ZT, dia. 6.3 mm, stainless steel with sealing washer 14 mm
- \* Available from competent dealer

- 8\* Aluminium-blind rivet
- 9\* Wall bracket
- 10 Extruded Al-liner
- 11\* Plastic board (thermal separation)
- 12 ALUCOBOND Window sill
- 13 ALUCOBOND side folding (window sill)
- 14 Folded Al-sheet (water drainage)
- 15 Fixing angle (Support for window sill)
- 16 Extruded window connecting section 38 464

# Fascia, Tray Panels SZ 20 – Horizontal Panel Layout

Front Elevation (Window sill) for page 3.50 Scale 1:2



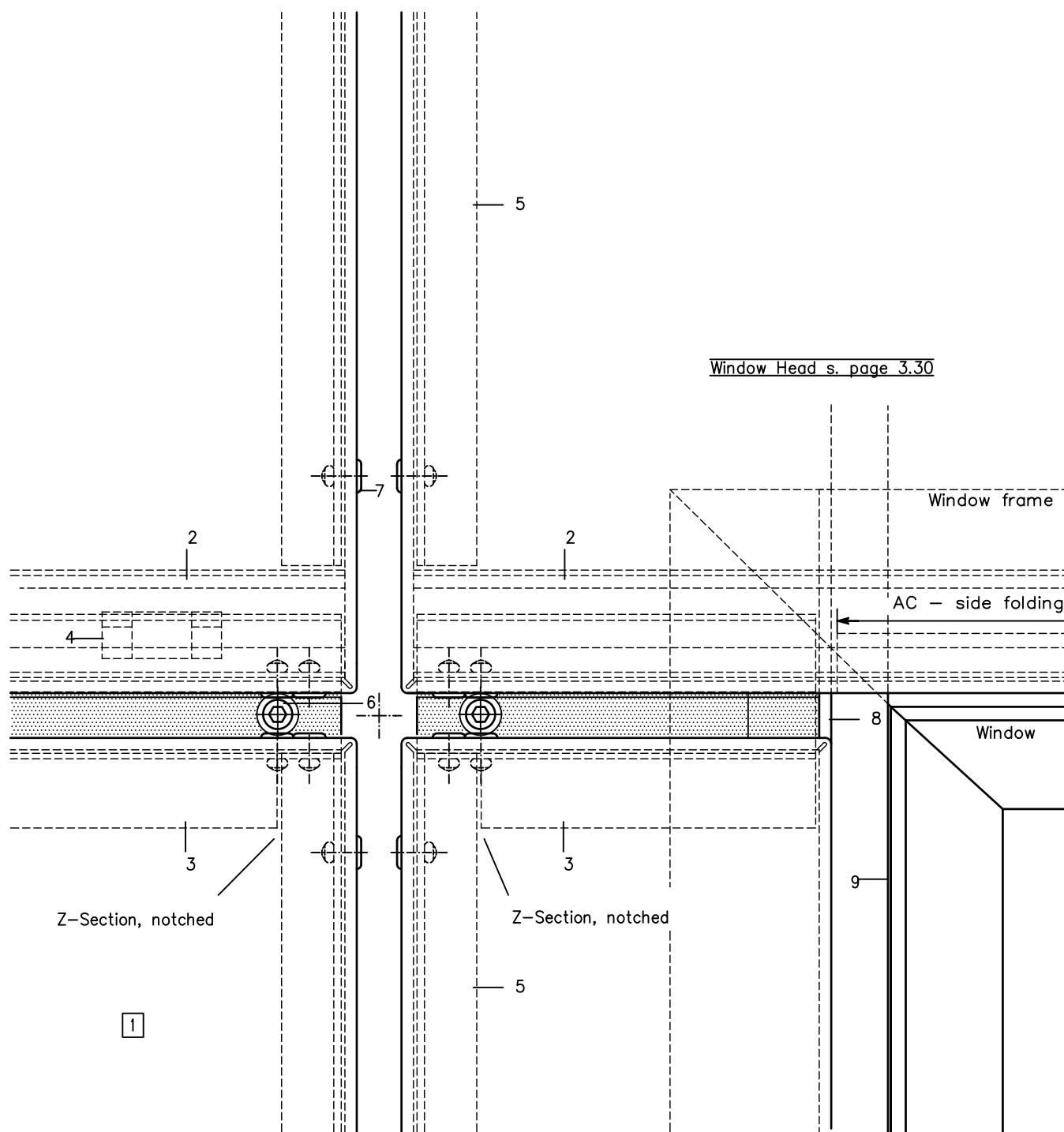
- 1 ALUCOBOND
- 2 Extruded S-Section 44024
- 3 Extruded Z-Section 44025
- 4\* Plastic clip SZ 20
- 5 Extruded U-Section 40/20/2,5
- 6 Fascia screw JZ3-ZT, dia. 6.3 mm, stainless steel with sealing washer 14 mm

- 7\* Aluminium-blind rivet
- 8 ALUCOBOND window sill
- 9 ALUCOBOND side folding (window sill)
- 10 Folded Al-sheet (water drainage)
- 11 Fixing angle (Support for window sill)
- 12 Reveal
- 13 Guiding rail (jalousie)

\* Available from competent dealer

# Fascia, Tray Panels SZ 20 – Horizontal Panel Layout

Front Elevation (Window Head) for page 3.50 Scale 1:2



- 1 ALUCOBOND
- 2 Extruded S-Section 44024
- 3 Extruded Z-Section 44025
- 4\* Plastic clip SZ 20
- 5 Extruded U-Section 40/20/2,5
- 6\* Fascia screw JZ3-ZT, dia. 6.3 mm, stainless steel with sealing washer 14 mm

- 7\* Aluminium-blind rivet
- 8 Reveal
- 9 Guiding rail (jalousie)

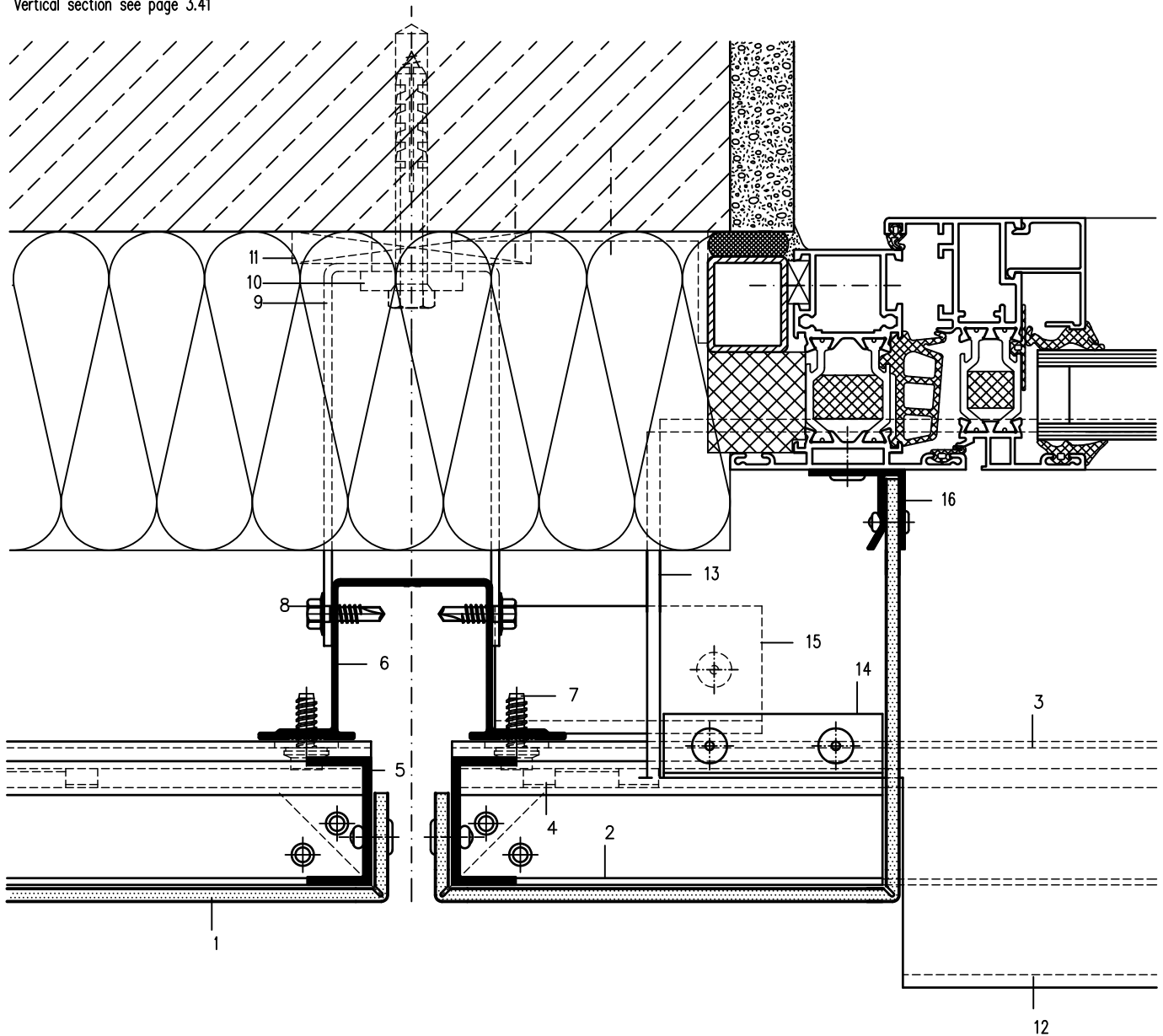
\* Available from competent dealer

# Fascia, Tray Panels SZ 20 – Horizontal Panel Layout

Window Jamb (Section 5–5) Scale 1:2

Vertical section see page 3.41

Product changes in the sense of a technical progress are reserved. All advice recommendation and information is given to the best of our knowledge but without any obligation on our part. 11/09



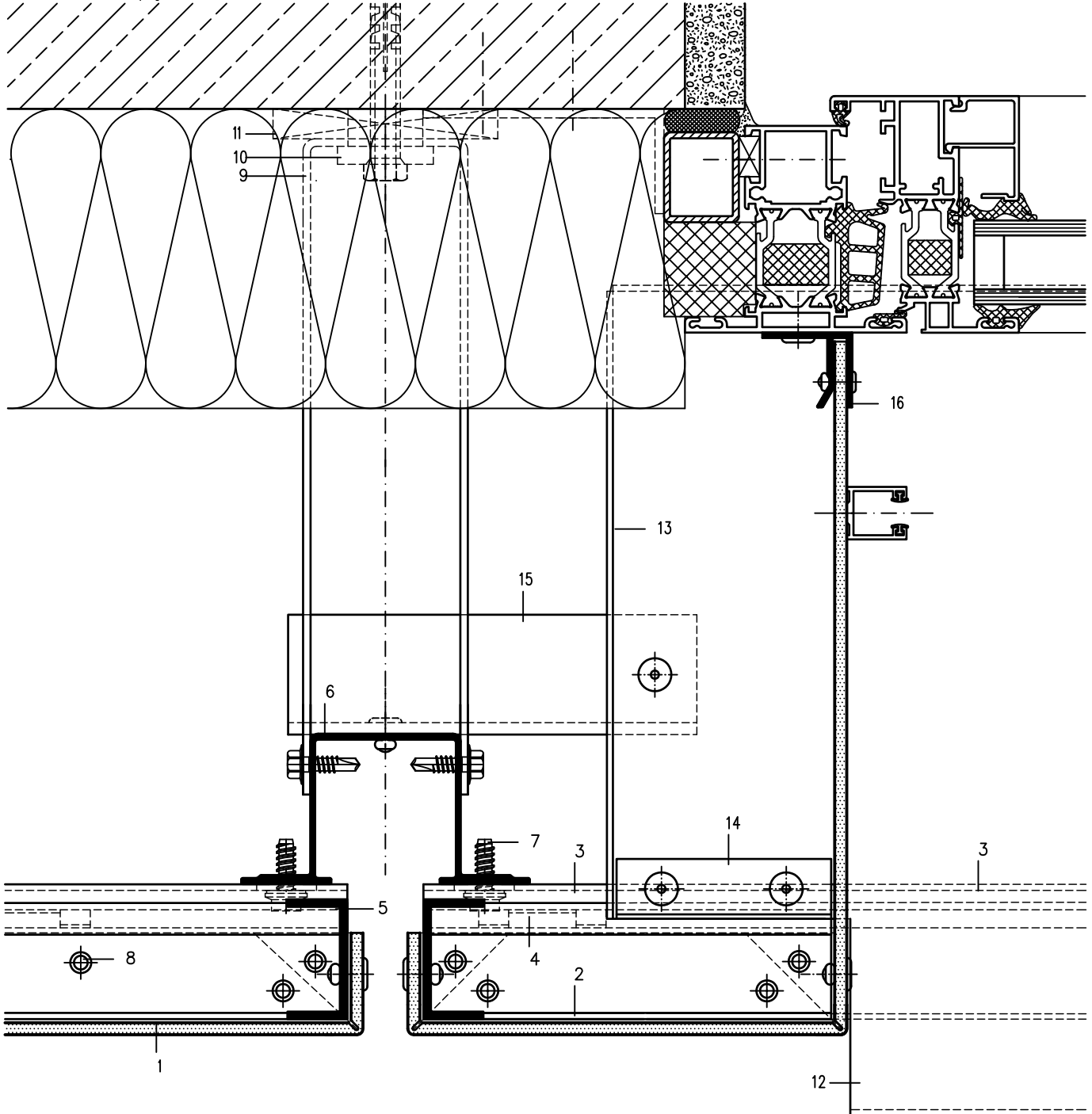
- 1 ALUCOBOND
- 2 Extruded S-Section 44024
- 3 Extruded Z-Section 44025
- 4\* Plastic clip SZ 20
- 5 Extruded U-Section 40/20/2,5
- 6 Extruded hat section 35 953
- 7\* Fascia screw JZ3-ZT, dia. 6.3 mm, stainless steel with sealing washer 14 mm
- \* Available from competent dealer

- 8\* Self drilling screw
- 9\* Wall bracket
- 10 Extruded Al-liner
- 11\* Plastic board (thermal separation)
- 12 ALUCOBOND window sill
- 13 ALUCOBOND side folding (window sill)
- 14 Folded Al-sheet (water drainage)
- 15 Fixing angle (Support for window sill)
- 16 Extruded window connecting section 38 464

# Fascia, Tray Panels SZ 20 – Horizontal Panel Layout

Window Jamb (Section 5-5) Scale 1:2

Vertical section see page 3.42

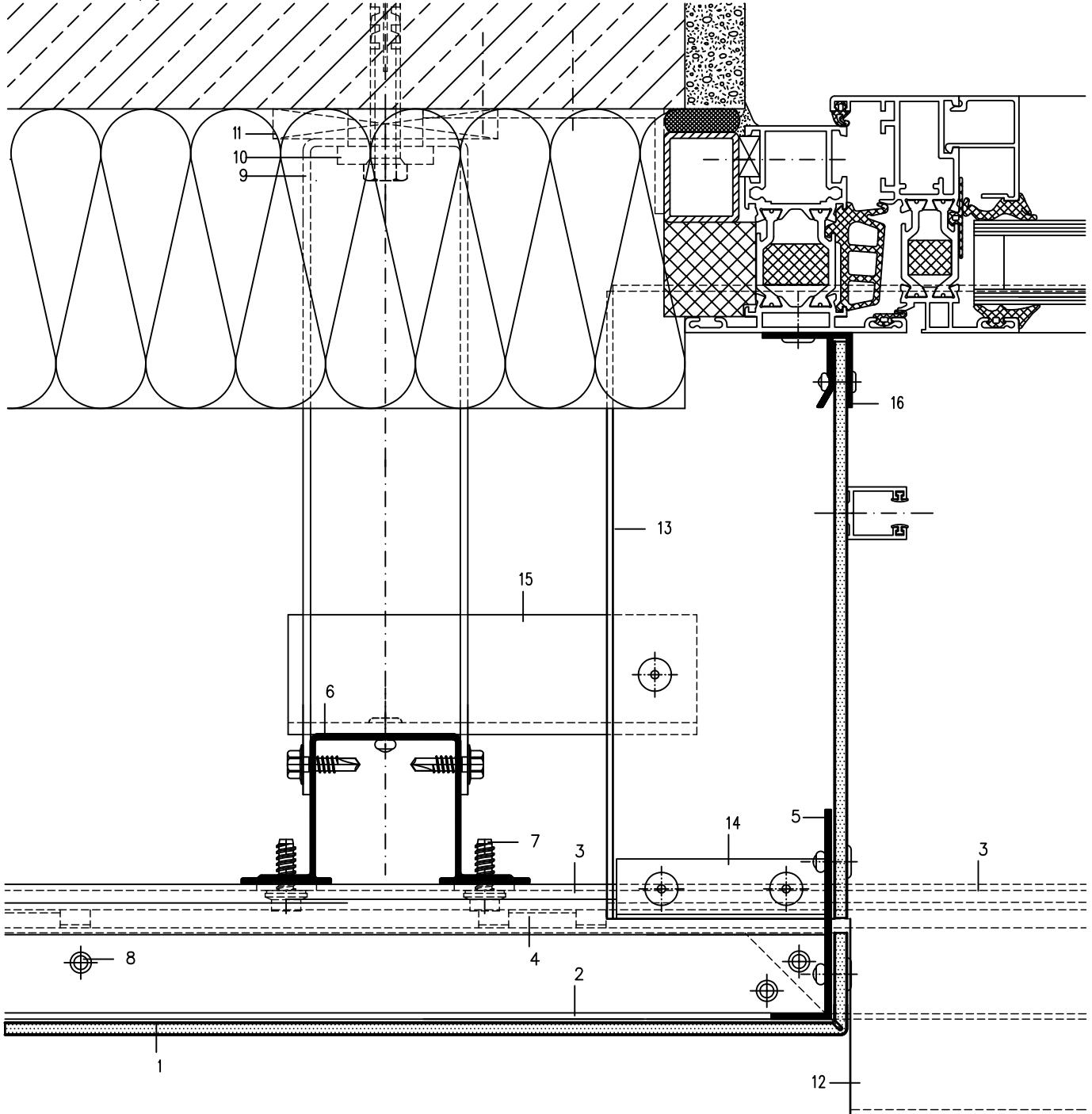


- |   |  |
|---|--|
| 1 ALUCOBOND   | 8* Aluminium-blind rivet                     |
| 2 Extruded S-Section 44024  | 9* Wall bracket                              |
| 3 Extruded Z-Section 44025  | 10 Extruded Al-liner                         |
| 4* Plastic clip SZ 20   | 11* Plastic board (thermal separation)       |
| 5 Extruded U-Section 40/20/2,5  | 12 Window sill-shaped aluminium sheet        |
| 6 Extruded hat section 35 953   | 13 ALUCOBOND side folding (window sill)      |
| 7* Fascia screw JZ3-ZT, dia. 6.3 mm,<br>stainless steel with sealing washer 14 mm | 14 Folded Al-sheet (water drainage)          |
| * Available from competent dealer   | 15 Fixing angle (Support for window sill)    |
|   | 16 Extruded window connecting section 38 464 |

# Fascia, Tray Panels SZ 20 – Horizontal Panel Layout

Window Jamb (Section 5–5) Scale 1:2

Vertical section see page 3.42A

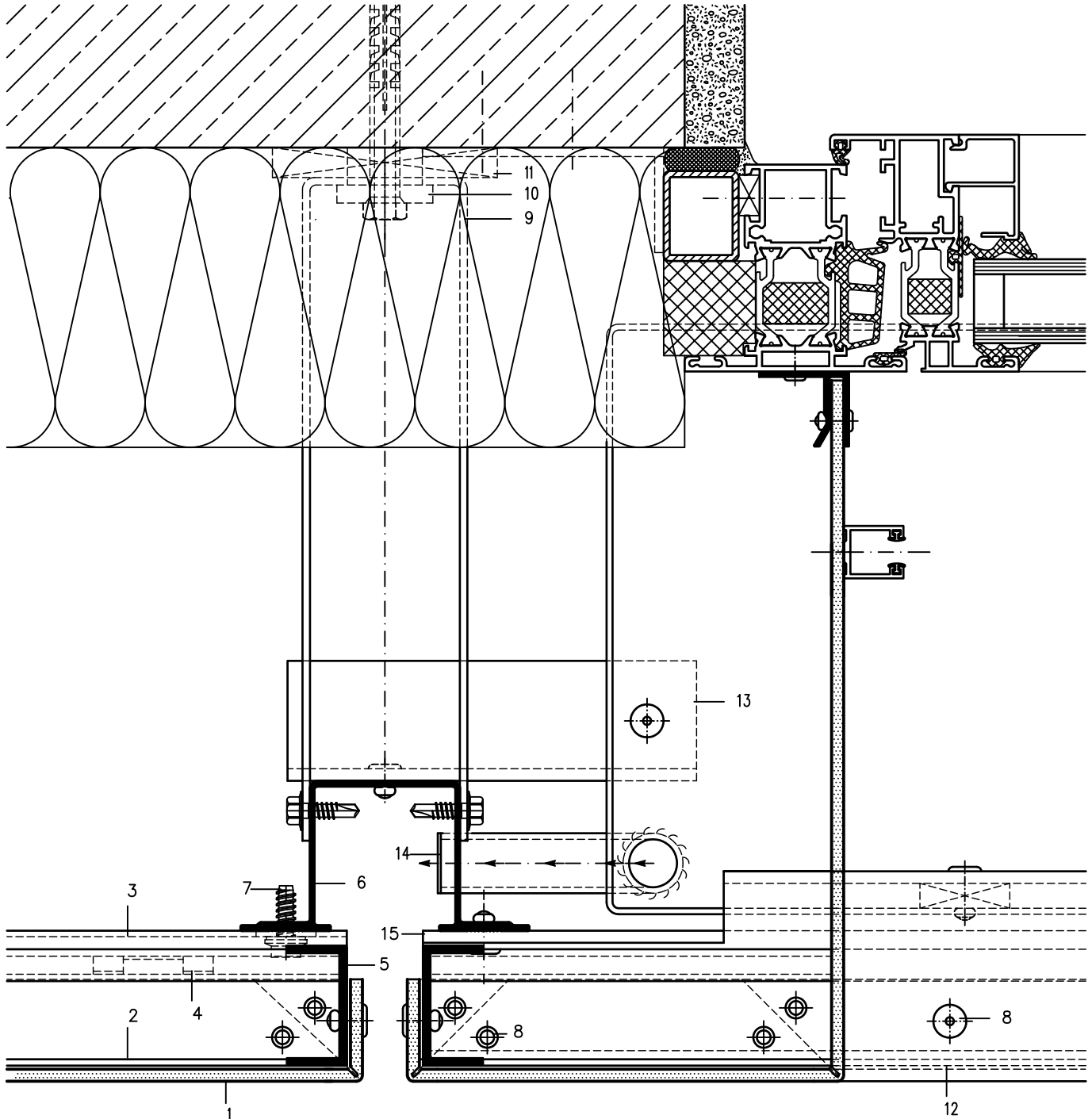


- |   |  |
|---|--|
| 1 ALUCOBOND   | 8* Aluminium-blind rivet                     |
| 2 Extruded S-Section 44024  | 9* Wall bracket                              |
| 3 Extruded Z-Section 44025  | 10 Extruded Al-liner                         |
| 4* Plastic clip SZ 20   | 11* Plastic board (thermal separation)       |
| 5 Extruded L-Section  | 12 Window sill-shaped aluminium sheet        |
| 6 Extruded hat section 35 953   | 13 ALUCOBOND side folding (window sill)      |
| 7* Fascia screw JZ3-ZT, dia. 6.3 mm,<br>stainless steel with sealing washer 14 mm | 14 Folded Al-sheet (water drainage)          |
| * Available from competent dealer   | 15 Fixing angle (Support for window sill)    |
|   | 16 Extruded window connecting section 38 464 |

# Fascia, Tray Panels SZ 20 – Horizontal Panel Layout

Window Jamb (Section 5–5) Scale 1:2

Vertical section see page 3.43



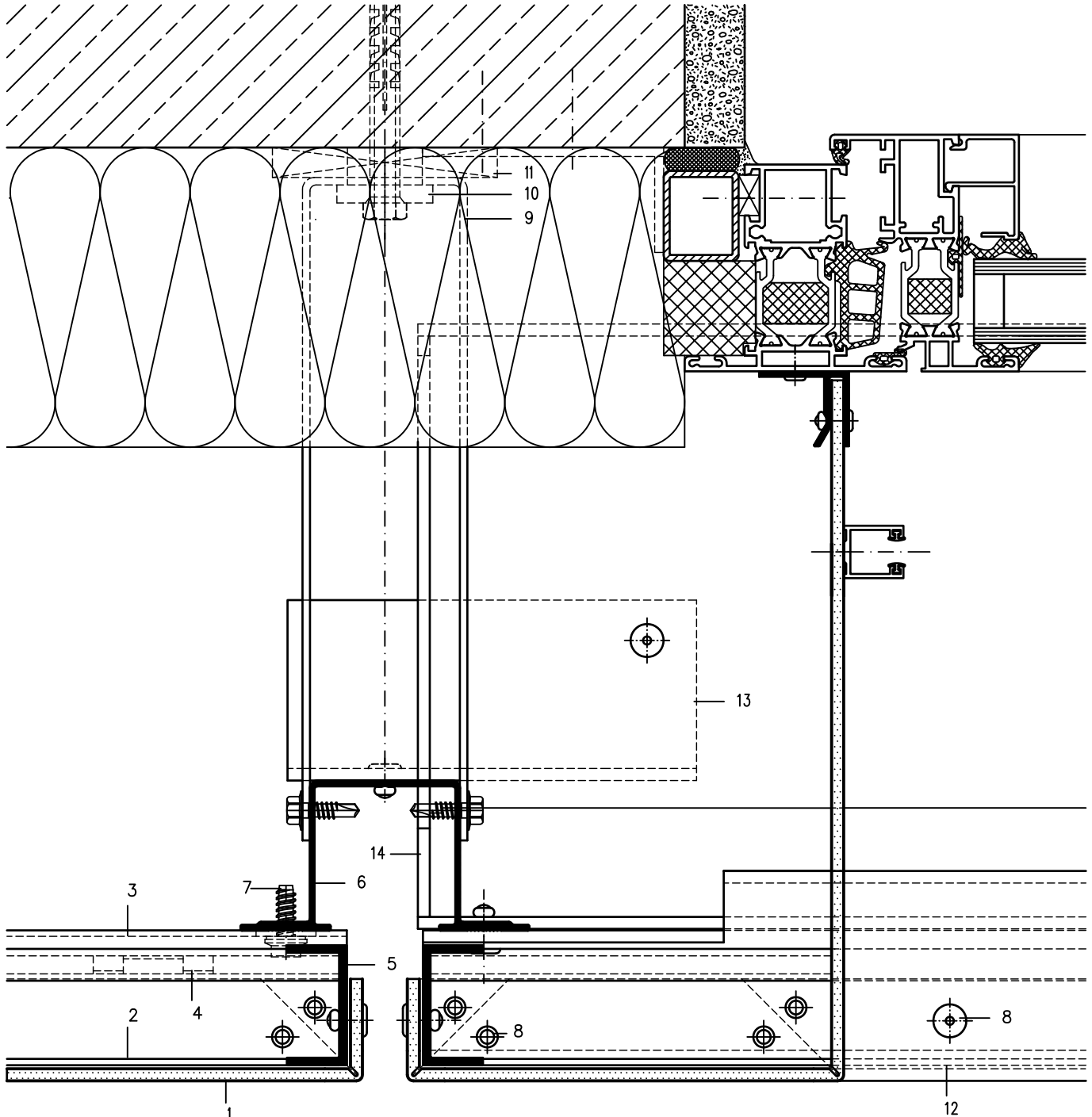
- 1 ALUCOBOND
- 2 Extruded S-Section 44024
- 3 Extruded Z-Section 44025
- 4\* Plastic clip SZ 20
- 5 Extruded U-Section 40/20/2,5
- 6 Extruded hat section 35 953
- 7\* Fascia screw JZ3-ZT, dia. 6.3 mm, stainless steel with sealing washer 14 mm
- \* Available from competent dealer

- 8\* Aluminium-blind rivet
- 9\* Wall bracket
- 10 Extruded Al-liner
- 11\* Plastic board (thermal separation)
- 12 ALUCOBOND Window sill
- 13 Fixing angle (Support for window sill)
- 14 Water drainage
- 15 ALUCOBOND side folding (window sill)

# Fascia, Tray Panels SZ 20 – Horizontal Panel Layout

Window Jamb (Section 5–5) Scale 1:2

Vertical section see page 3.44



- 1 ALUCOBOND
- 2 Extruded S-Section 44024
- 3 Extruded Z-Section 44025
- 4\* Plastic clip SZ 20
- 5 Extruded U-Section 40/20/2,5
- 6 Extruded hat section 35 953
- 7\* Fascia screw JZ3-ZT, dia. 6.3 mm, stainless steel with sealing washer 14 mm
- \* Available from competent dealer

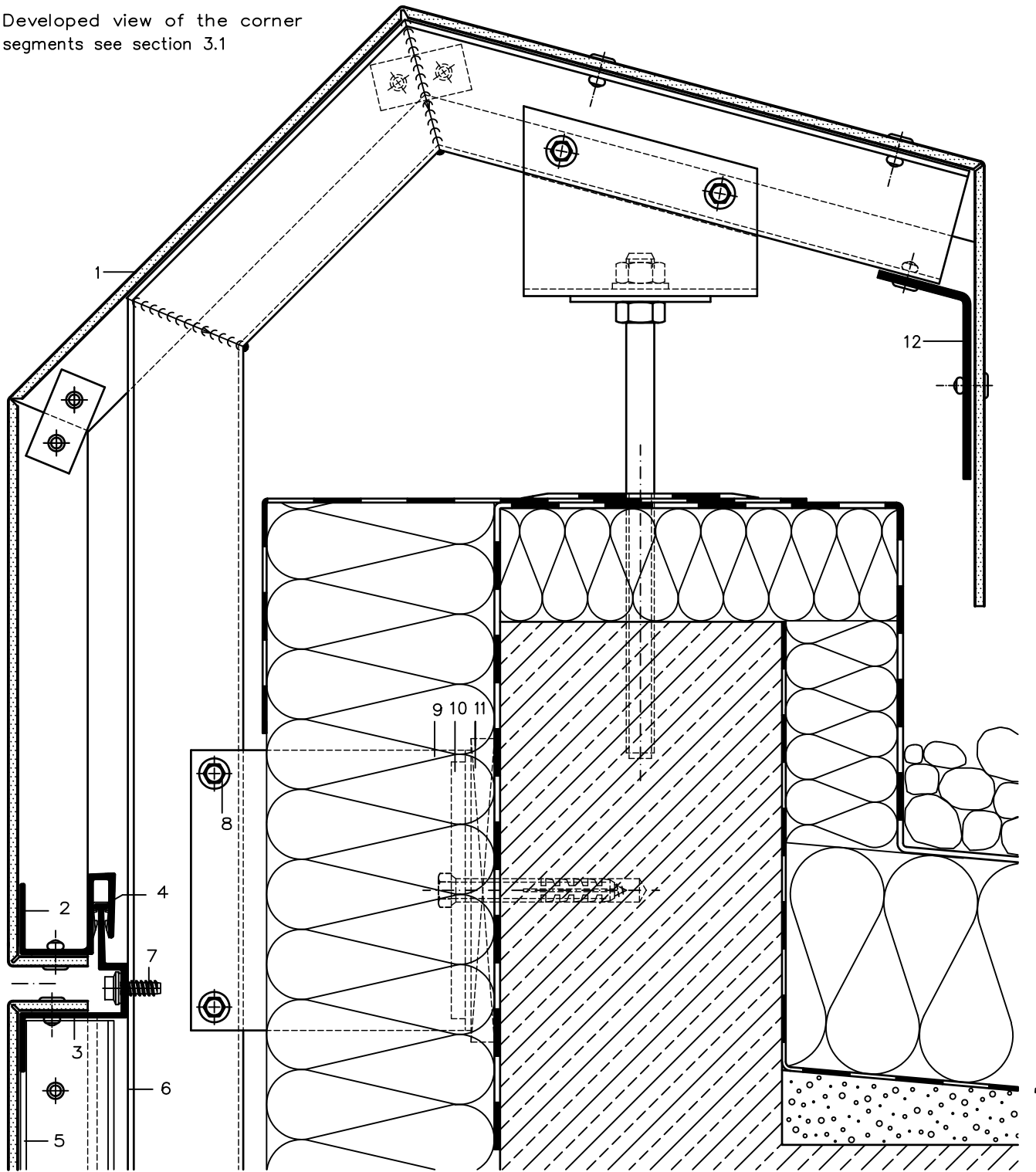
- 8\* Aluminium-blind rivet
- 9\* Wall bracket
- 10 Extruded Al-liner
- 11\* Plastic board (thermal separation)
- 12 ALUCOBOND Window sill
- 13 Fixing angle (Support for window sill)
- 14 Water drainage



# Fascia, Tray Panels SZ 20 – Horizontal Panel Layout

## Parapet Return (Section 6–6) Scale 1:2,5

Developed view of the corner segments see section 3.1



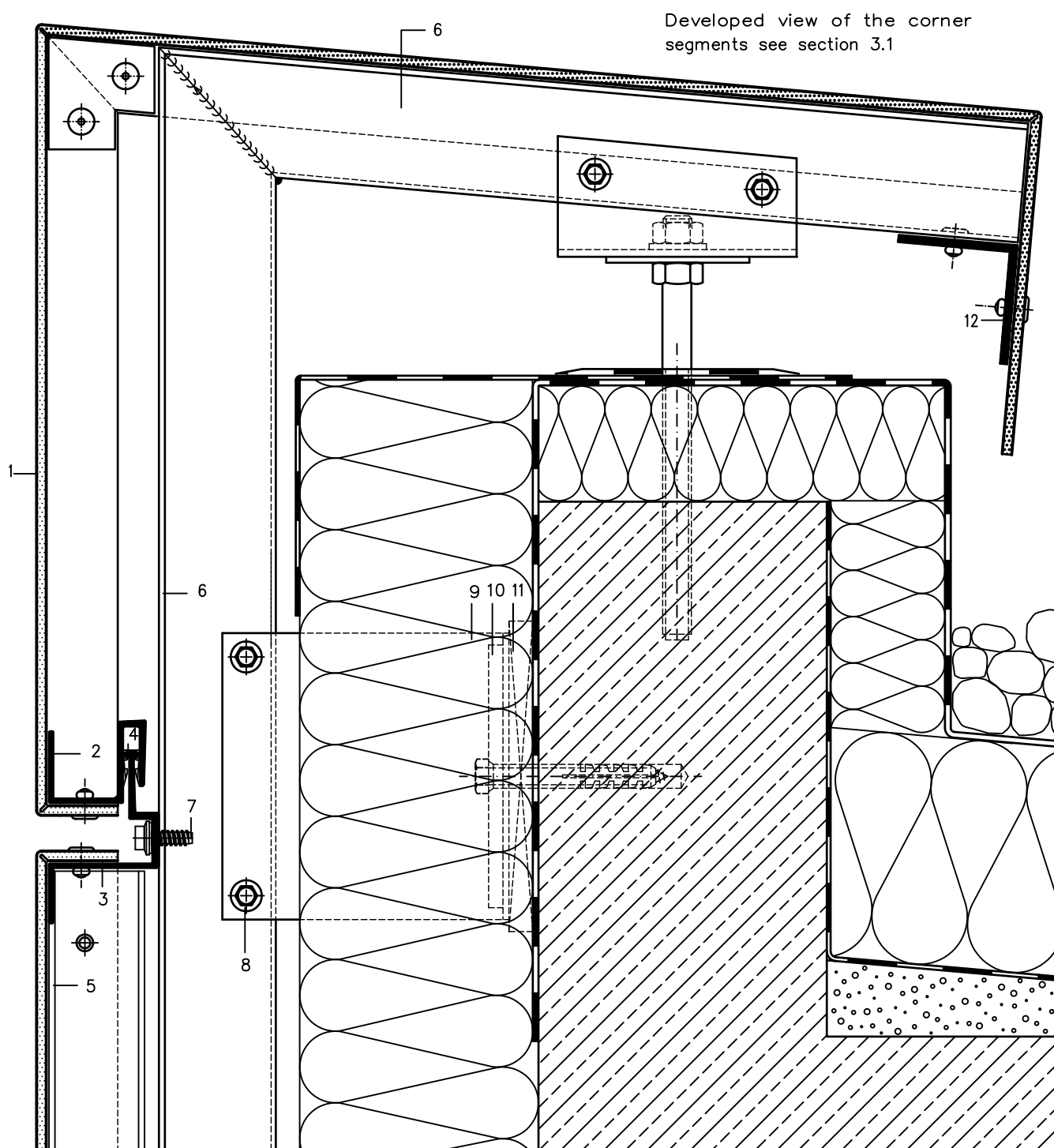
- 1 ALUCOBOND
- 2 Extruded S-Section 44024
- 3 Extruded Z-Section 44025
- 4\* Plastic clip SZ 20
- 5 Extruded U-Section 40/20/2,5
- 6 Extruded hat section 35 953
- \* Available from competent dealer

- 7\* Fascia screw JZ3-ZT, dia. 6.3 mm, stainless steel with sealing washer 14 mm
- 8\* Self drilling screw
- 9\* Wall bracket
- 10 Extruded Al-liner
- 11\* Plastic board (thermal separation)
- 12 Fixing angle

# Fascia, Tray Panels SZ 20 – Horizontal Panel Layout

Parapet Return (Section 6–6) Scale 1:2,5

Product changes in the sense of a technical progress are reserved. All advice recommendation and information is given to the best of our knowledge but without any obligation on our part. 11/09



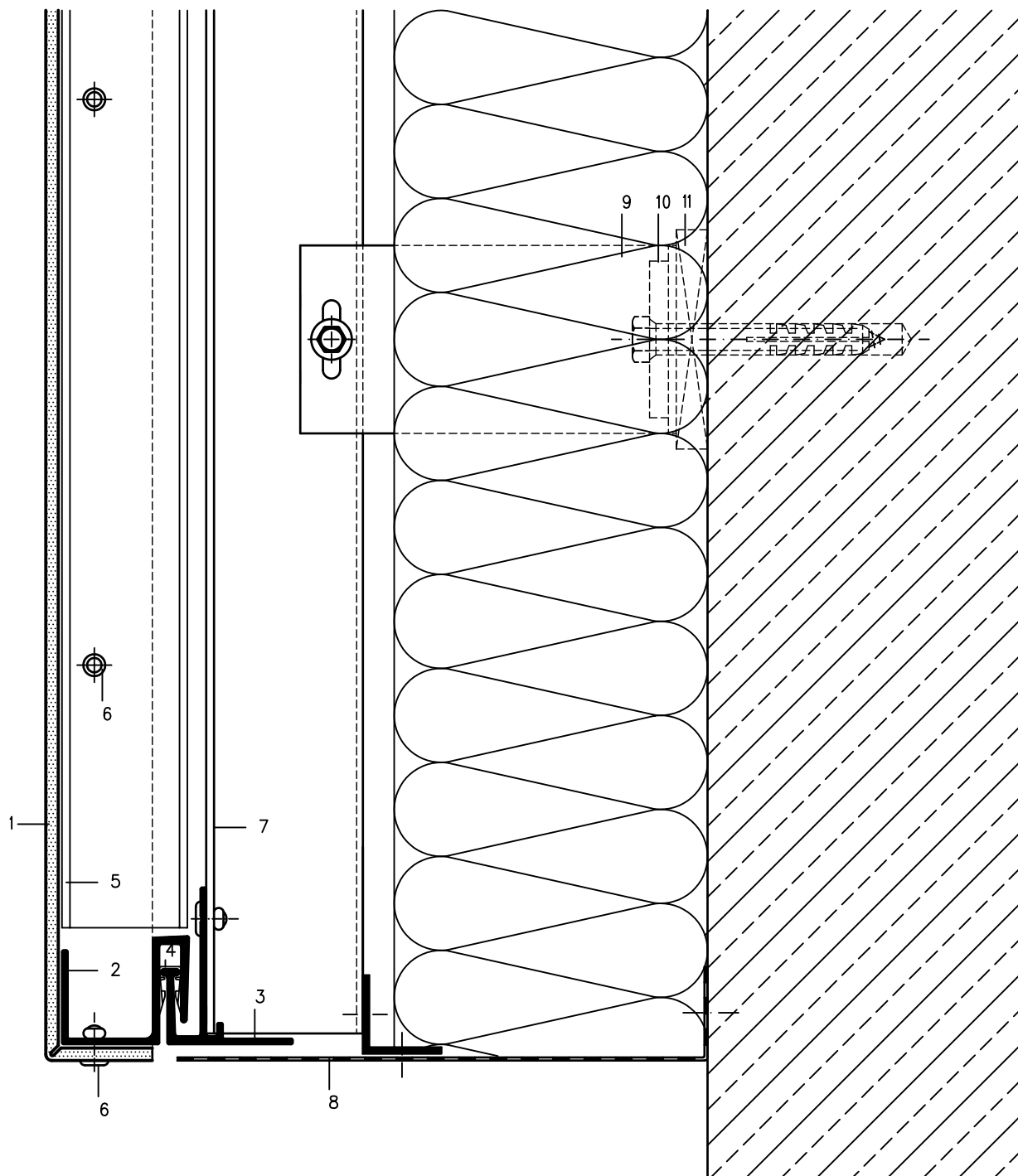
- 1 ALUCOBOND
- 2 Extruded S-Section 44024
- 3 Extruded Z-Section 44025
- 4\* Plastic clip SZ 20
- 5 Extruded U-Section 40/20/2,5
- 6 Extruded hat section 35 953

- 7\* Fascia screw JZ3–ZT, dia. 6.3 mm, stainless steel with sealing washer 14 mm
- 8\* Self drilling screw
- 9\* Wall bracket
- 10 Extruded Al-liner
- 11\* Plastic board (thermal separation)
- 12 Fixing angle

\* Available from competent dealer

# Fascia, Tray Panels SZ 20 – Horizontal Panel Layout

Lower Cladding End (Section 7–7) Scale 1:2



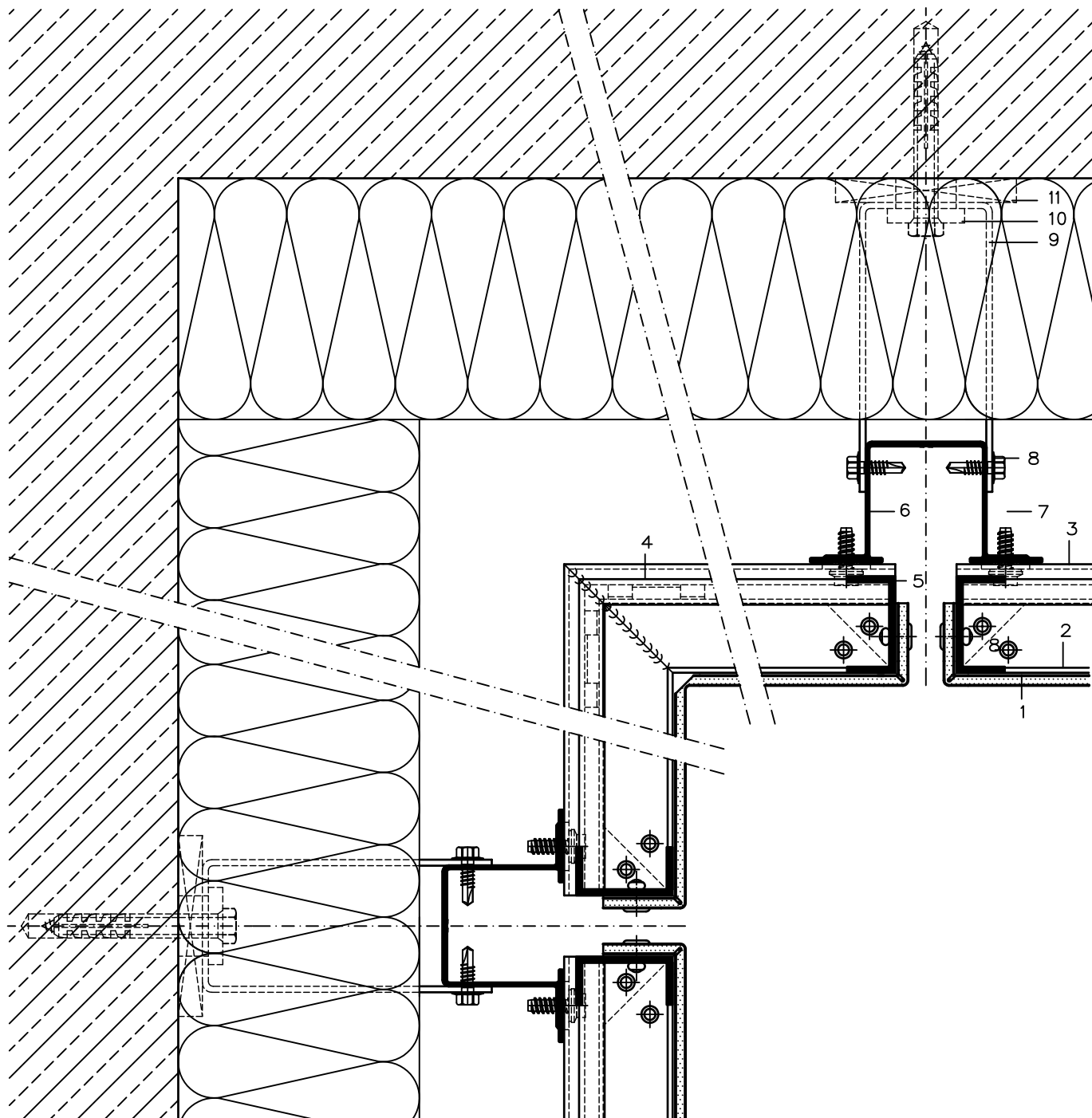
- 1 ALUCOBOND
- 2 Extruded S-Section 44024
- 3 Extruded base section 44026
- 4 Plastic clip SZ 20
- 5 Extruded U-Section 40/20/2,5
- 6\* Aluminium-blind rivet

- 7 Extruded hat section 35 953
- 8\* Ventilating section/perforated sheet
- 9\* Wall bracket
- 10 Extruded Al-liner
- 11\* Plastic board (thermal separation)

\* Available from competent dealer

# Fascia, Tray Panels SZ 20 – Horizontal Panel Layout

Corner Segment/Inner Corner (Section 8–8) Scale 1:2,5



- 1 ALUCOBOND
- 2 Extruded S-Section 44024
- 3 Extruded Z-Section 44025
- 4\* Plastic clip SZ 20
- 5 Extruded U-Section 40/20/2,5
- 6 Extruded hat section 35 953

- 7\* Fascia screw JZ3-ZT, dia. 6.3 mm, stainless steel with sealing washer 14 mm
- 8\* Self drilling screw
- 9\* Wall bracket
- 10 Extruded Al-liner
- 11\* Plastic board (thermal separation)

\* Available from competent dealer

Technical drawing of a window frame assembly, showing a cross-section of the wall, the window frame, and the glazing unit. The drawing includes numbered callouts (1-11) and a legend.

**Legend:**

- 1. Glass pane
- 2. Glazing gasket
- 3. Glazing frame
- 4. Window frame
- 5. Window frame gasket
- 6. Window frame gasket
- 7. Window frame gasket
- 8. Window frame gasket
- 9. Window frame gasket
- 10. Window frame gasket
- 11. Window frame gasket

The drawing shows a cross-section of a wall with a window frame. The wall is shown with diagonal hatching. The window frame is shown with a series of vertical lines. The glazing unit is shown with a series of horizontal lines. The drawing includes numbered callouts (1-11) and a legend.

- 7\* Fascia screw JZ3-ZT, dia. 6.3 mm, stainless steel with sealing washer 14 mm
- 8\* Self drilling screw
- 9\* Wall bracket
- 10 Extruded Al-liner
- 11\* Plastic board (thermal separation)

Product changes in the sense of a technical progress are reserved. All advice recommendation and information is given to the best of our knowledge but without any obligation on our part. 11/09